

2015

STANLY COUNTY AIRPORT
M.W. MULLINIX TERMINAL



STANLY COUNTY
NORTH CAROLINA

Water. Air. Land. Success.

Report to the People

Culture & Recreation Economic & Physical Development Education Environmental Protection Human Services Public Safety Transportation

STANLYCOUNTYNC.GOV

COUNTY COMMISSIONERS

On behalf of the Stanly County Board of Commissioners, I am pleased to present the 12th annual Report to the People. This annual report provides an overview of the many services provided by the County and highlights the results and accomplishments. It is the County's goal to provide services that improve quality of life and add value to the taxpayers.

During 2015, the Board of County Commissioners made several key investments in programs, services and assets aimed at improving education, public safety and economic development. This was done while still maintaining the same, affordable tax rate for the ninth (9) consecutive year. Below please find a list of some, but not all, of the investments the Board made this past year:

- Secured financing and began construction on a new cosmetology facility at Stanly Community College
- Successfully implemented a new emergency radio system within budget
- Increased expenditures for public schools by \$332,000 to enhance science, technology, engineering and math (STEM) education as well as teacher supplements
- Increased funding for vehicle replacement for both the Sheriff's Office and EMS
- Completed construction of the Mission area water distribution project
- Began construction on the comprehensive rehab of the Greater Badin water distribution system
- Helped facilitate and secure four (4) new economic development projects leading to the creation of 74 new jobs and \$7 million in taxable investment
- Initiated the planning and design of a new livestock arena at the Agri-Civic Center
- In 2016 and beyond, the Board of Commissioners will continue its focus on making investments to enhance education and workforce development, improve public health and safety and spur additional job creation.

On behalf of the Board of Commissioners and all of the staff, it is our honor and privilege to serve the residents of this county and share with you the accomplishments from the past year. We are proud of the staff and believe the information contained in this report demonstrates our commitment to outstanding customer service and a results-oriented government.

Respectfully,



Terry Scott Efird, Chairman
Stanly County Board of Commissioners

Pictured Left to Right:
Peter Ascitutto, Tony Dennis, Vice-Chairman Bill Lawhon,
Chairman Scott Efird, Jann Lowder, Gene McIntyre, Joseph Burseson



CULTURE & RECREATION

Agri-Civic Center

2015 was another tremendous year for the Agri-Civic Center.

Highlights include:

- Stage maintenance – sanded stage and refinished for quality
- Parking lot lights converted to LED for energy efficiency
- Parking lot sealed, resurfaced and restriped
- Auditorium seats bolted down for safety and preservation
- Bat remediation for infestation

The Friends of the Agri-Civic Center (FACC) continue to support the facility with cosmetic enhancements to save taxpayers money while enhancing the overall appearance of the venue:

- Reupholstered and repaired lobby benches
- Outdoor picnic tables & patio benches
- Portable lectern with Bluetooth
- Portable screen
- Cost-shared stage repair

Public Library

- Citizens checked out 174,057 items
- 11,000 people attended on-site programs. The library also provides programming at day cares, nutrition sites, and nursing homes.
- Approximately 1,000 people attended monthly historical programs sponsored by the museum and historical society.
- Many of the library and museum programs are made possible by support from the Friends of the Library and the Historical Society. Friends of the Library provides money for eBooks, the Summer Reading Program kick-off for students, and the library's participation in Albemarle Downtown Christmas. The Historical Society helps maintain the historical Snuggs House and Marks House by providing funding for cosmetic and structural repairs as well as volunteers for tours and special events.
- Last summer, Stanly, the Library Lion, joined our staff. Stanly is a small stuffed lion that is available to check out to take on an adventure. Stanly has already visited great sites in North Carolina as well as other countries, including: Machu Pichu, Peru, and Nagasaki, Japan.

Save the Date!

FACC's 'Stanly County Agri-Civic Day' will be Saturday, August 20, 9am-3pm! Please join us for a day full of free, family fun!

ECONOMIC & PHYSICAL DEVELOPMENT

NC Cooperative Extension

Agricultural producers were assisted through Extension programs to help them become more profitable and sustainable through increased knowledge of best management practices. \$405,000 of additional income was earned by producers as a result of implementing best management practices in their farming operations.

Stanly County 4-H program is continuing to offer positive youth development opportunities through both traditional and non-traditional delivery methods. 1,055 youth were reached through hands-on school-enrichment activities. Students and teachers reported an increase in science skills, a better understanding of local government and civic engagement, and increased knowledge about agriculture and how it affects our everyday lives.

624 citizens participated in programming addressing healthy eating, physical activity and chronic disease risk reduction. These programs were conducted through a variety of activities that included: Steps to Health Nutrition Education Programs for second and third graders (45% of students reported they are making positive nutritional behavior changes); Better Choices nutrition education for limited resource adults (80% of participants reported they made positive nutrition behavior changes); a community garden project; a cooking show on the local cable channel that featured healthy recipes using local ingredients; Speedway to Healthy nutrition education for third graders (78% of students reported they are making positive behavior changes); Go, Glow, Grow nutrition education for preschoolers (97% of parents reported an improvement in their child's willingness to taste new fruits and vegetables); Kids in the Kitchen Cooking Camps (100 percent of Parents reported observing their children trying new foods, helping more in the kitchen and increased interest in gardening); and the Little Farmers' Corner for young children at the Commons Farmers' Market that targets low-income families by accepting SNAP benefits.

Volunteers are essential to increasing the impact of Cooperative Extension by extending the outreach of the Extension staff. 306 volunteers provided

2,411 hours of time valued at \$53,380 while providing educational information directly to 3,819 clients.

Planning & Zoning

The Planning Department works with landowners and developers to permit the best uses of property throughout the county. Planning focuses on growth areas identified in the 2010 Stanly County Land-Use Plan and on areas with infrastructure in place to support new development. Redevelopment of existing properties is encouraged as the Planning Department supports economic development efforts throughout the county. Zoning enforcement makes certain property values and public safety are protected based on the county-wide zoning ordinance, public nuisance ordinance and minimum housing standards. Since its inception in 2010, over 48 abandoned manufactured homes have been removed through the Abandoned Manufactured Home Program with approximately 80 others removed by the owners. Property owners with abandoned manufactured homes may apply to have these removed through this program. 2015 saw an increase in the number of zoning compliance permits issued as the amount of construction and renovations grew in the county. The Planning Department contracts with each municipality for a variety of services and code enforcement activities.

- Issued Zoning Compliance Permits for the municipalities of Albemarle, Misenheimer, Red Cross, Oakboro, Richfield, New London, Badin, Norwood and Stanfield.
- Enforced the Minimum Housing Code for the municipalities of New London, Badin, Norwood, and Locust.
- Enforced the Public Nuisance Ordinances for New London, Badin and Norwood.

2015	New Cases	Cases Resolved	Ongoing
Stanly County	4	1	16
Stanly Zoning	63	62	35
Badin Housing	25	23	20
Norwood Housing	11	26	20
Locust Housing	1	6	8
New London Housing	5	2	9

Economic Development Commission

Unemployment Rate* (Not Seasonally Adjusted)

	Dec. 2013	Dec. 2014	Dec. 2015
Stanly County	6.2%	4.7%	4.9%
Charlotte Region	7.0%	5.3%	4.9%
North Carolina	6.9%	5.2%	5.3%
United States	6.7%	5.6%	4.8%

* Source: North Carolina Department of Commerce Division of Employment Security

We have continued to experience the type of strength in the local labor market that mirrors the developments in our regional market. Project activity levels, especially for more capital intensive projects, appeared to improve toward the end of the year as uncertainty relating to North Carolina's incentives was lifted. Expansions and new investments like the decision by Kraftman, Inc., a manufacturer of trailers and associated products for the transportation industry, to create 20 new jobs to expand its production capacity in Albemarle; and Piedmont Custom Meats new meat processing facility outside of Richfield that will result in the creation of 40 jobs and \$2.5M in new investment, continue to move forward.

Other Business Development Highlights:

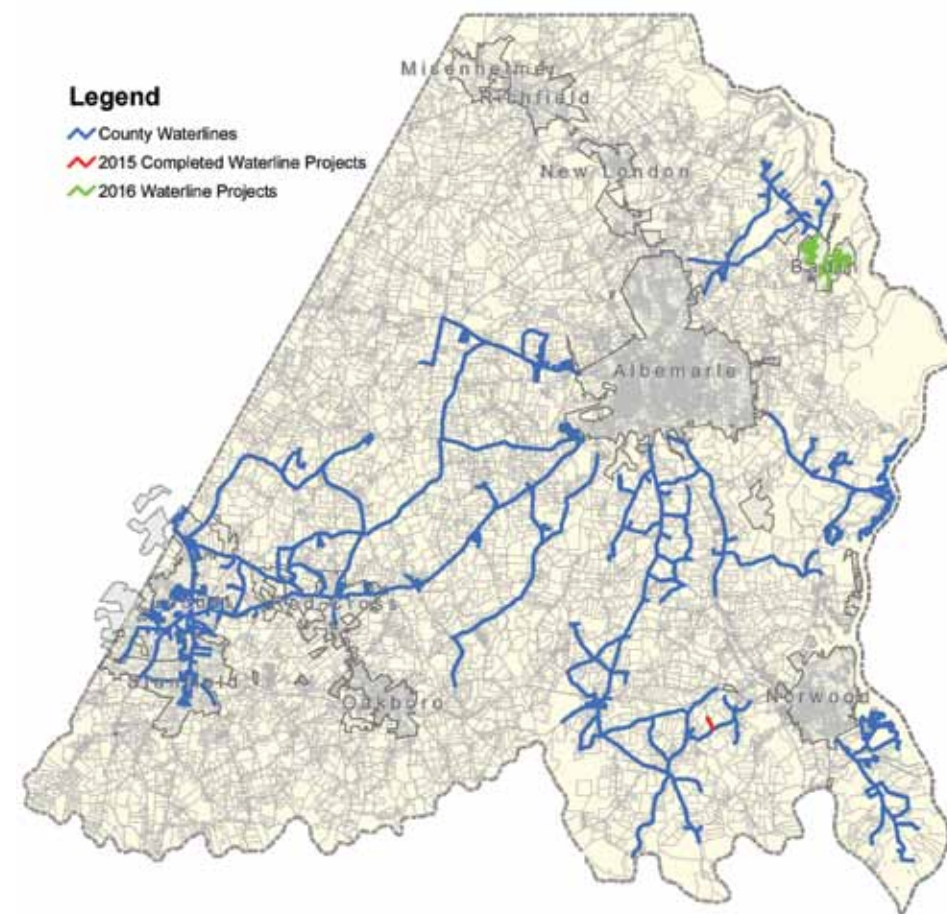
- Hosted "Stanly County Manufacturing Awareness Week", four days of events to promote knowledge of STEM and manufacturing-related careers among middle school STEM students as part of Stanly County's observance of National Manufacturing Day on October 2. These events, co-sponsored by the Centralina Workforce Development Board, Stanly Community College and the Stanly County Chamber of Commerce, exposed 128 SCS middle school STEM students to everyday practical applications of science and technology skills in advanced manufacturing operations around the county through plant tours at local manufacturers and a tour of the programs available at Stanly County Community College's Advanced Manufacturing and Industrial Technology (AMIT) Center.
- Participated in the Charlotte Region Commercial Board of Realtors Broker Roundtable and other events geared to informing and communicating the location advantages of Stanly County to the regional industrial real estate community.
- Continued "Business Breakfast Series" events to inform existing industry about assets and programs available to them to grow their business. Our "Targeting New Opportunities" Ally Luncheon in September held at Lucky Clays Farm highlighted Stanly County's economic development assets and featured Economic Development Partnership of North Carolina CEO Chris Chung speaking to a gathering of regional allies and developers.
- Continued to work with local and regional workforce development partners and will help lead Business Engagement teams as part of a larger effort by the Centralina Workforce Development Board and Stanly Community College to continue to collect employer feedback on workforce assets and needs and share information with local workforce partners.
- Continue to assist with fiber assessment and development options to enhance broadband connectivity in the county.
- Successfully closed out several grants including an existing Golden LEAF grant for Michelin and a Building Reuse grant for UFP New London's facility in Stanfield. Administering Building Reuse grants for Kraftman, Inc. and Piedmont Custom Meats.
- Identified and obtained market feedback on several additional well-served sites suitable for development. Narrowed the sites for further consideration and started the process of obtaining information and discussing possible approaches and costs associated with these options.

Utilities

Stanly County Utilities (SCU) is responsible for distributing more than 1.5 million gallons of drinking water every day to more than 5,600 homes, schools, churches and businesses in Stanly County. SCU operates as four water systems - Stanly County (west of Albemarle along Hwy 24-27 to Red Cross, Locust and Stanfield, south of Albemarle to Aquadale and Dennis Road, east of Albemarle along Hwy 740 toward Badin, and northeast of Albemarle in the Palestine and Palmerville communities), Greater Badin Water & Sewer District (town limits of Badin), Piney Point Water District (Piney Point community and the Fork Road community south of Norwood) and Stanly Water & Sewer Authority (east of the Albemarle city limits to Lake Tillery and Indian Mound Road, Cottonville area and Mission Church area). The water provided to County consumers is purchased from the City of Albemarle and the Town of Norwood. SCU staff ensures the County's drinking water is of high quality and provides reliable service 24 hours per day, 7 days per week. SCU also provides wastewater collection and treatment to over 700 customers in the Greater Badin district and collection of wastewater from northern part of Stanly County, the County Airport region, the Town of Red Cross, the Palestine community, the Millingport community, the Ridgecrest community and the Aquadale community. These services promote public health and sanitation in these communities.

2015 highlights:

- Started construction on complete replacement of Badin's water system - funding was obtained in 2013.
- Awarded 2.6 million dollars in loan funds to rehabilitate the West Stanly WWTP and the McCoy's Creek pump station. Project is currently in design stage and will begin construction in 2017.



Soil and Water Conservation Service

Agricultural Cost Share Program

- Received \$73,786 for the Agriculture Cost Share Program (ACSP), \$32,500 for the Agricultural Water Resources Assistance Program (AgWRAP), and \$3,589 for the Community Conservation Assistance Program (CCAP). The District received \$109,875 from the NC Division of Soil and Water Conservation. Nine contracts were written obligating a total of \$109,854.

Educational Outreach

- Sponsored a 5th grade poster contest, 6th grade essay PowerPoint contest, and a 7th grade public speaking contest. "We All Live in a Watershed" was the theme.
- Two high school students attended the summer Resource Conservation Workshop sponsored by the NC Association of Soil and Water Conservation Districts. The workshop was held at NC State University and was made possible through scholarships from First Bank and Uwharrie Bank.
- Partnered with Rowan and Cabarrus to host a Land Judging Contest for high school students in the tri-county area.
- Two Stanly County middle school environmental teams competed in the Southern Piedmont Envirothon. Both teams advanced to the NC State Envirothon sponsored by the NC Association of Soil and Water Conservation Districts and Duke Energy Foundation.
- A NC State University student from Stanly County was awarded the Career-in-Conservation scholarship, a \$1,000 merit-based scholarship from the NC Division of Soil and Water Conservation.
- Provided instruction on soil and water conservation to 3,803 students ranging from Pre-K through 12th grade.
- Partnered with the Natural Resource Conservation Service to host a Soil Health Field Day with the purpose of demonstrating the soil health values of using multi-species cover crops. This was made possible through a grant from the NC Foundation for Soil and Water Conservation.

Services Provided

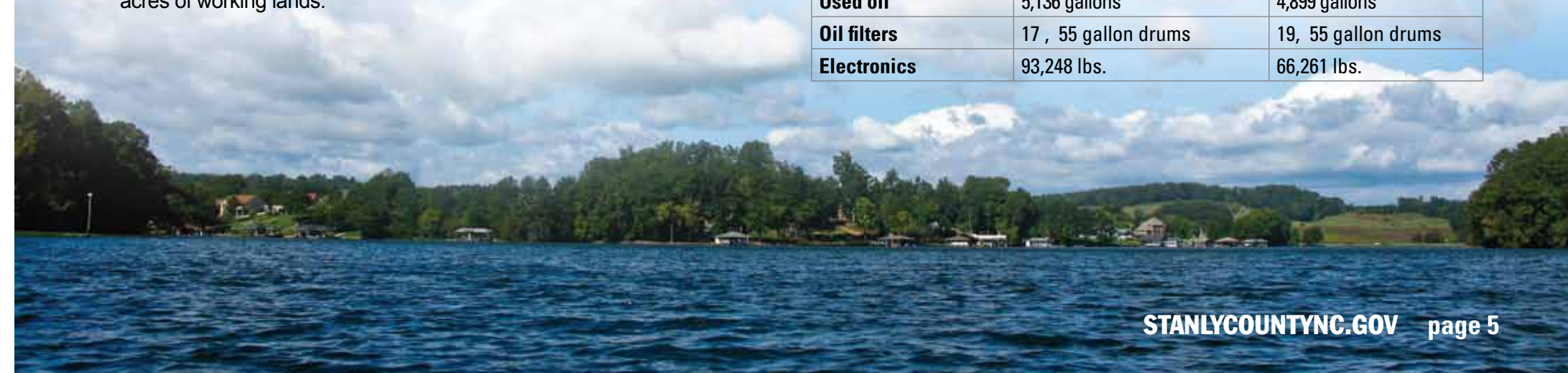
- The No-Till Drill was used to reseed 288 acres of pasture and cropland. Planting seed without tilling the soil improves soil health and prevents erosion.
- Sold over 2,000 tree seedlings used for erosion control, farm enhancement, windbreaks and home landscaping.
- Erosion control materials are available for purchase to help control erosion on slopes and channels and to stabilize soils for reseeding.
- Natural Resources Conservation Service (NRCS) obligated two contracts for a total of \$52,728 in federal funding for the installation and adoption of best management practices to address natural resource concerns on 103 acres of working lands.



Solid Waste

Materials Handled at Convenience Sites

	FY 2014	FY 2015
Household trash	6,668 tons	6,441 tons
Recyclable materials	513 tons	525 tons
Used oil	5,136 gallons	4,899 gallons
Oil filters	17, 55 gallon drums	19, 55 gallon drums
Electronics	93,248 lbs.	66,261 lbs.



Facilities Management

Facilities Management is responsible for all county road signs, nine (9) convenience sites and over twenty (20) buildings and grounds which are owned or occupied by county departments.

Information for FY 2015 (July 1, 2014 through June 30, 2015)

Facilities Management	Work orders	2,312
	Average work orders per day	9
	Hours spent on other facility projects	3,151
Sign Department	Road signs replaced or repaired	531
	Signs set up for Planning & Zoning	23

Accomplishments:

- Sheriff's Office - paint and installation of new carpet
- Commons - new roof SE side, pave north end of parking lot, new tile in DSS & Health Dept. - new sidewalk & planter area east side, and new HVAC for Elections
- Courthouse - new tile and carpet in basement hall, EMS, Tax office, DA's Office and Register of Deeds.
- Oversee selling surplus items
- Library - remove old counter and reconnect new counter, added new flooring
- Household Hazardous Waste Event - Collected 39,585 lbs. of materials such as paint, paint related items, electronics, pesticide and fluorescent bulbs

Save the Date!

The next Household Hazardous Waste event is set for April 2, 9am-1pm in the parking lot at the Agri-Civic Center.

Elections

Date	Type	Absentee	Election Day	Total Ballots Cast
9/15/2015	Primary	218	438	656
11/3/2015	General	548	2,146	2,694
Totals		766	2,584	3,350

Information Technology/GIS

Data breaches all over the world have occurred where the personal information of millions of people have been exposed via malicious online activities. The NSA, OPM, and Target are just a few large organizations that have fallen victim to data breaches in the recent past. These types of breaches can cause tremendous hardship not only on the organizations themselves, but on each of the individuals whose data was compromised. Recovering from such an event requires tremendous time, energy, and resources. Just as all these organizations rely heavily on information systems and the data contained in them so does the County. In response to this ever-increasing level and sophistication of cyber threats the main focus of IT this fiscal year has been to increase our cyber security posture. We are taking all measures within our means to mitigate our risk of cyber attack. Some of those measures include an annual Cyber Security Awareness training program that all our employees must complete each year. This program

consists of a series of videos produced by a reputable firm and released each quarter and discuss varying topics within the subject of cyber security.

We continuously review our security and appropriate use policies and make changes as necessary. Where appropriate, we are moving all websites off site to achieve separation between public facing systems and internal systems. We are in the beginning phases of implementing an industry-recognized cybersecurity framework so we can standardize on methods and terminology. We now have a cybersecurity insurance policy in place to deal with an incident should it ever occur. This will not only help monetarily, but also provides access to expert resources that will assist us with things such as public relations, cyber forensics, and citizen support. We continue to fine tune our strategies based on the current threat landscape.

Tax Administration

The Stanly County Tax Administration Office is comprised of two sections: the Assessor's Office and the Collector's Office. The Assessor's Office includes Real Property, Personal Property, and Land Records/Mapping. The Assessor's Office is responsible for valuing all real estate, improvements to real estate, personal property, business personal property, and motor vehicles. Land Records/Mapping is responsible for keeping land ownership up to date by working closely with the Register of Deeds Office to record all land transfers and splits of parcels. The Collector's Office is charged with collecting the levy due Stanly County, ten (10) Municipalities, thirteen (13) Fire Districts, and two (2) Special Districts. They also collect for nuisance liens and EMS bills.

- The Collector's Office yielded a 96.54% collection rate for FY14-15. Collection enforcement methods utilized included Garnishments, Bank Attachments, Debt Setoff, Escheat, and Foreclosure. \$128,743 of delinquent tax revenue was generated through the Foreclosure process.
- Land Records/Mapping identified and processed 2,875 deeds and completed many miscellaneous name changes resulting from death certificates, will files, and estate closures.
- The Real Property Division completed approximately 1,200 field visits for new construction and appeals. They also continued work on the 2017 revaluation project. All field visits are complete which involved visiting/appraising all 38,000 parcels in the county. In 2016, appraisers will continue to analyze property sales in order to place final assessed values on all real property in the county as of January 1, 2017.
- The Personal Property Division processed 1,300 Homestead and Veterans exemptions, resulting in an exclusion amount of \$52,419,358. The NC DMV "Tax and Tag" program is fully operational with the Assessor's Office processing an average of 5,250 registered motor vehicles monthly in 2015 with a 99.2% collection rate. The Personal Property Division also sent out approximately 7,500 personal property listings and 3,100 business personal property listings.

Register of Deeds

The Register of Deeds Office has a new website that will allow for the creation of a database for thousands of historical documents that have not been digitized. They will include Slave Records, Commissioner's Minute Books, Objections to Issuing Marriage Licenses, Store Ledgers, Tax Books, County Finance, Justice Dockets, Resolutions, Bonds, Precinct Books, miscellaneous contracts and many other documents.

- Fraud Prevention Notification Service is provided to Stanly County property owners at no charge. When you register with this system, you will receive email notifications for all property documents you record with the Stanly County Register of Deeds...and all those you DIDN'T record!

- Each year this office has exceeded the North Carolina Secretary of State's Indexing Standards requirements.
- At the 63rd Annual Conference of the North Carolina Association of Register of Deeds Suzanne Lowder was elected to Chair the NCARD District III and will serve on the association's Executive and Legislative committees. She was also appointed to the Automation Technology Committee, Strategic Long Range Planning Committee and the Vital Records Committee.
- Revenues are up 16%, Foreclosures are down 27%, and Bankruptcies are down 52%. 18,100 documents were recorded, the most recordings since 2008.

HEALTH & HUMAN SERVICES

Health Department

- Provided clinical services to 5,077 people.
- WIC (Women, Infants, & Children) Program served a monthly average of 663 women and children and had a caseload of 1,687.
- Children's dental clinic provided services through 6,471 clinic visits and provided dental treatment to 144 patients through the operating room at Stanly Regional Medical Center.
- Stanly County Home Health Agency maintained an average monthly caseload of 130 patients and made 13,372 patient visits.
- Animal Control handled 1,450 stray or unwanted pets. A total of 159 animals were reclaimed by owners and 169 were adopted or placed in new homes. Special rabies clinics in the county resulted in vaccinations of 372 dogs and 44 cats.
- Environmental Health completed 980 Food & Lodging visits related to the inspection of food service, institution, daycare, and lodging facilities. Environmental Health made 1,313 site visits related to on-site wastewater and the private well water program and 199 water samples were collected.
- Provided an employee health clinic for County employees to help address increasing costs of medical care. There were 963 visits to the employee clinic.
- Completed the 2015 Stanly County Community Health Needs Assessment in collaboration with Carolinas HealthCare System Stanly Regional Medical Center. This assessment is completed every three years and provides a review of various health and human service data to monitor the health status of Stanly County. Among many health concerns identified, heart disease and substance abuse were selected as priority focus areas.
- Coordinated efforts of the Stanly County Partners in Health coalition, which promotes activities to address community health issues such as obesity, injury prevention, substance abuse, physical activity and tobacco use. Efforts continue to implement the Project Lazarus model that has been very successful in other counties to help address prescription drug abuse.
- Partners in Health Coalition continued to support efforts of the Stanly County Minority Health Council which seeks to improve health outcomes for minorities and reduce health disparities. The health department also coordinated work of the Stanly County Child Fatality Prevention Team which met quarterly to review conditions surrounding child deaths to assess opportunities for preventing future fatalities.
- With the goal of increasing the availability of high quality, nutritious foods to families with the greatest risk of having poor health, the Stanly Commons Farmers Market continues to be supported by the health department and is able to accept SNAP (Supplemental Nutrition Assistance Program, formerly known as Food Stamps).

Senior Services

The Senior Services Department has provide quality services, programs, activities and opportunities to promote and enhance the well-being of seniors since 1986.

- Offered over 100 activities, programs, classes and trips.
- Offered Evidence Based Health Promotion classes which were Living Healthy Chronic Disease Self-Management, Matter of Balance Fall Prevention, Powerful Tools for the Caregivers and Living Healthy with Diabetes.
- 1,800 citizens visit the Senior Center monthly.
- Continued our partnership to provide and promote Uwharrie Senior Games and Silver Arts (USG) in which approximately 100 seniors age 55+ in Stanly and Montgomery Counties compete in fun and competitive events.
- In-Home Aide Services and Family Caregiver Support Programs assisted 154 seniors and their families with 17,459 hours of direct assistance with home management, respite, and personal care. Participants receiving these services made voluntary contributions totaling \$9,098.
- Sponsored 13th annual CareFest with 26 vendor agencies represented to share information about services in the county and 158 participants in attendance.
- Provided 102 days of group respite through the CARE Café.
- Hosted the 4th annual GrandCare Recognition Luncheon in collaboration with the Stanly County DSS and vendor tables from nine area service organizations. This event to honor grandparents who are raising grandchildren.
- Received United Way funding in 2015 for In Home Services which allows us to serve an additional 15 clients.
- The nutrition program served 21,265 congregate meals from the four sites in the county and 31,349 home delivered meals to 492 participants. Approximately 1,090 cases of supplemental nutrition drink such as Ensure Plus and Glucerna Shake were issued to eligible seniors. Participants receiving services through the congregate and home delivered meal programs contributed \$38,796 for services received.
- Information and Options Counseling assisted 982 seniors or family members last year finding resources and assistance for their particular needs.
- Contracted with Stanly County Transportation (SCUSA) and provided 5,690 one-way trips for senior adults with transportation to medical appointments, nutrition sites and other errands.
- Held annual 90+ Birthday Party for Stanly County residents with approximately 75 seniors aged 90 years or older. There were nine in attendance aged 100 or older.
- AARP Tax Aide volunteers prepared approximately 300 income tax returns for Stanly County residents.
- Received a Stanly County Arts Council Grassroots Art Program grant for a Senior Spirit Day at the EE Waddell Center



Social Services (DSS)

- Work First Employment Services assisted 39 families in becoming employed
- Collected \$4,320,047 in Child Support Payments for children in Stanly County
- There were 17 licensed foster families to care for our foster children
- Had placement responsibility for 48 children who were in foster care
- Provided \$1,882,508 to local daycare providers through the Child Day Care Subsidy Program
- Assessed 608 reports of children reported to be abused, neglected or dependent
- Issued 229 work permits to youth
- Allowed 95 disabled adults to remain in their own homes through the Community Alternative Program
- Assisted 21 adults with In-Home Aide Services
- Provided \$14,486,684 in Food Stamps
- Provided \$686,512 for heating or cooling assistance
- 175 individuals visited the agency each day
- Provided medical assistance to an average of 11,560 individuals per month

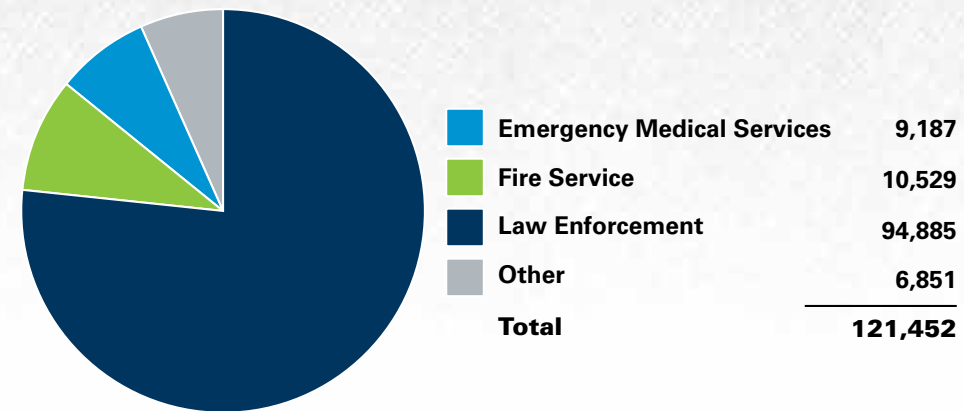
Veteran Services

This office assists veterans, dependants and surviving spouses with applications and forms required for Federal, State and County benefits through the Veteran Administration. We continue to encourage all Veterans, dependants, and surviving spouses to take advantage of all the services and benefits our Stanly County Veterans have earned.

The Veteran Services Officer is the only fully accredited representative that is authorized to represent the NC Division of Veterans Affairs and present claims before the US Dept. of Veteran Affairs in the county. This accreditation enables this office to access electronic files within the Veterans Administration to better assist all veterans and their families.

- Assisted over 3,800 Stanly County veterans, dependants and surviving spouses.
- College scholarships are available through this office for children of wartime NC Veterans. These scholarships are offered through the North Carolina Division of Veterans Affairs.
- Approximately \$650,000 in back payments were awarded to veterans and their families as a result of claims submitted through this office. Monthly payments of \$115,000 were also awarded.

911 Communications



Emergency Services

Stanly County Emergency Services is a tiered department: Emergency Management, Emergency Medical Service (EMS), and the Fire Marshal's Office (FMO).

Emergency Management defines an 'all hazards' approach to preparedness, response, recovery and mitigation of any natural, man-made or terrorist disaster. EM annually identifies and prioritizes all hazard vulnerabilities and any new threats and updates the Emergency Operation Plan accordingly. This year we received final approval of the new Regional Multi-Jurisdictional Hazard Mitigation Plan, which combines us with Union and Cabarrus Counties and all municipalities. The EM office has been actively involved in the new Public Safety Radio project. We have been actively engaged in the template design of all Public Safety radios and subsequent programming. The Local Emergency Planning Committee continues with quarterly meetings and has begun to take an all hazards approach to all disaster planning.

Emergency Medical Services continues to adapt and grow with ever-changing pre-hospital medical practices. Implemented a 6th unit trial run during peak call volume, a trial for utilizing a BLS (Basic Life Support) unit, eventually this lead to utilizing part-time staff to put a 6th ALS unit in operation 24/7 to meet the call volume demand and an increase in transfers from hospital to hospital. Additionally, all policies have been updated to adjust for increased call volumes and to reduce response times, fuel usage, maintenance costs and unit utilization. EMS was also awarded funding for the purchase of five (5) new ambulances. These units utilize an on-board generator to power the module. This will aid in extending the chassis life.

The Fire Marshal's Office continues to strive for excellence in service and continues to make comprehensive fire investigations a priority.

- Conducted 510 fire inspections
- Responded to 77 fire investigations/calls for service
- Conducted numerous fire and life safety education programs to a wide range of community stakeholders. Programs include Home Fire Safety, Fire Safety in the Work Place, Fire Extinguisher Training, Evacuation Training and more.

Sheriff's Office Operations & Public Safety

	2013	2014	2015
Calls for service	16,059	11,739	18,065
Alarm Calls – Residential & Business	896	886	980
Building & Residential Security Checks	2,625	3,418	2,322
Breaking & Entering (Residential & Business)	208	244	256
Breaking & Entering (Vehicles)	37	29	31
Civil Debt Collections	\$60,413	\$37,286	\$26,528
Criminal & Civil Processes Served	8,044	7,982	7,527
Continuing Education/In-Service Training Hours	6,281	3,332	4,864
Criminal reports filed	867	794	2,822
Domestic Violence Assaults	13	22	191
Domestic Violence Orders Entered	70	179	165
Drug Values & Drug Money Seized	\$108,420	\$3,606	\$121,038
Evictions	204	186	131
Handguns Purchase Permits	2,413	1,402	1,018
Concealed Handgun Permits & Renewals	1,147	952	867
K-9 assistance requests	111	104	180
Sexual Assaults	17	17	22
Stolen property recovered	\$141,204	\$385,570	\$106,251
Stolen vehicles recovered	4	2	8
Warrants	909	910	927

Detention Center Operations

	2014	2015
Bookings Processed	2,176	2,630
Average daily population	74	85
Average inmate stay (days)	12.6	11.9

Courthouse Operations

- Stanly County has five courtrooms. Five (5) full-time bailiffs and six (6) part-time bailiffs provide courtroom security and assist the Judges and District Attorneys.
- Bailiffs transported 949 inmates to the courtroom from the detention center.
- 675 video arraignments were held where inmates appeared before a judge without leaving the safety and security of the detention facility.

Other Department Highlights:

- Officers conducted 205 verifications and 260 visits to confirm the residency and reporting requirements were met. There are presently 140 sex offenders registered in Stanly County 15 of which are in Federal, State or Local custody.

- 545 students graduated from Drug Awareness Resistance Education (DARE).
- Certifications obtained through N.C. Department of Justice's Training and Standards Commissions: four (4) officers obtained their Basic Certificates; one (1) received Intermediate Certificates; three (3) were awarded Intermediate Service Awards, and four (4) Officers were awarded their Advanced Law Enforcement Certification.

NC Forest Service

North Carolina Forest Service (Stanly County) protects, manages and promotes forest resources for the citizens of Stanly County. 2015 highlights include:

- Provided landowners with 51 written management plans involving 2,154 acres
- Established 417 acres of new forests
- Made 55 inspections involving 2,293 acres on timber harvesting projects, reforestation and forestry projects
- Performed 18 hazard reduction burns on 1,225 acres
- Responded to 68 fires that burned approximately 117 acres. Fire suppression costs totaled over \$27,000 for extinguishing wildfires in Stanly County.
- Saved \$13,407,000 in homes and outbuildings
- Responded to 15 pest control requests by landowners concerning various tree problems.
- Smokey Bear and staff appeared at several elementary schools as well as the majority of the local Christmas parades, the Stanly County Fair, Agri-Civic Day, and Arbor Day.
- Maintained eight (8) burning permit agent sites
- Issued 16 warning tickets
- Facilitated cost share assistance for the landowners in Stanly County who received assistance through the following programs:
 - Conservation Reserve Program - \$108,051
 - Environmental Quality Incentives Program - \$2,117
 - Forest Development Program - \$11,720
 - Stevens Burning - \$32,280

Inspections

Permit Type	2013	2014	2015
Residential Building Permits	103	93	145
Mobile Homes	25	33	42
Residential Remodels, Additions, Alterations	228	211	212
Commercial New Construction	80	65	135
Commercial Remodels, Additions, Alterations	114	111	124
Electrical Permits	1,238	764	952
Mechanical Permits	800	858	914
Plumbing Permits	543	488	505
Other Permits	50	70	86
Totals	3,181	2,693	3,115

2015 Major Building Permits

Fisher Solar Electric Power Plant	\$7,960,943
Old Central School – Renovations and Added Sq. Ft.	\$3,955,829
Shops at Olive Place – Shell Building	\$3,328,490
Hobby Lobby Store Upfit	\$2,039,232

Permit Type	2013 Construction Value	2014 Construction Value	2015 Construction Value
Residential Building	\$12,800,986	\$13,462,960	\$25,029,760
Mobile Homes	\$464,858	\$1,066,977	\$896,520
Residential Remodels, Additions, Alterations	\$5,858,002	\$7,853,522	\$4,616,653
Commercial New Construction	\$4,387,196	\$4,562,046	\$25,529,107
Commercial Remodels, Additions, Alterations	\$8,333,088	\$7,406,566	\$16,660,564
Totals	\$31,844,130	\$34,352,071	\$72,732,604

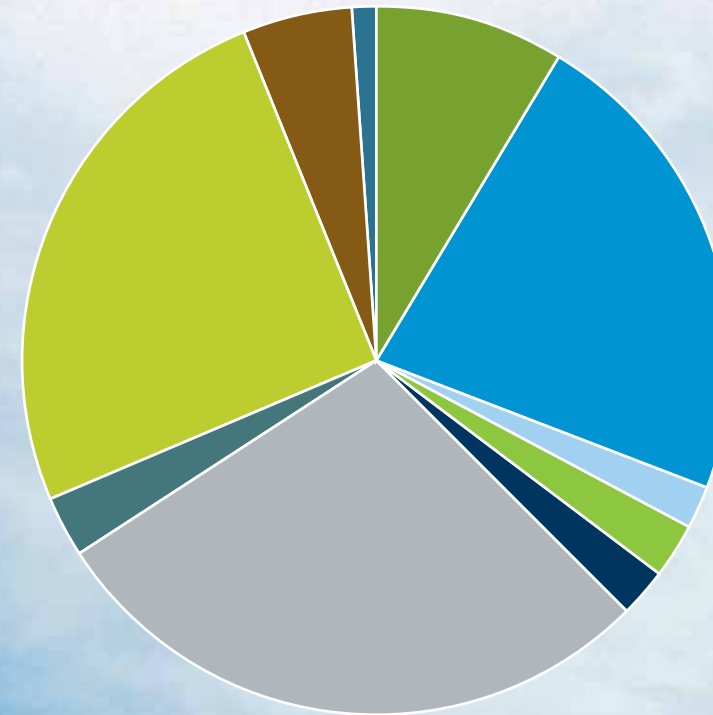
Inspections

	2013	2014	2015
Number of Inspections Performed	8,172	7,764	9,507
Plans Approved	169	118	114

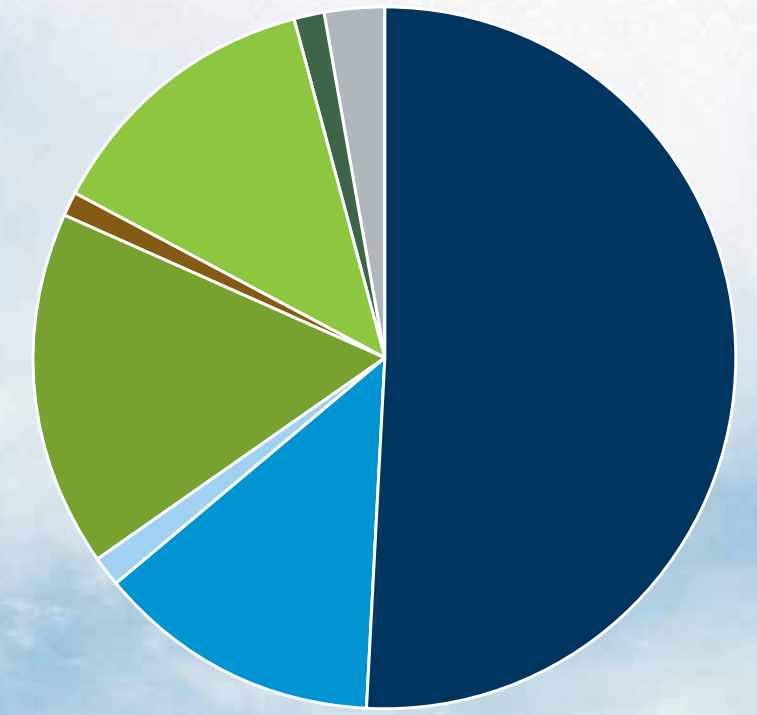
Want to be in the know?

Visit our website and sign up for Blackboard Connect to receive emergency notifications. www.stanlycountync.gov

Where Your Money Goes
FY 2015-2016: \$58,520,387



Where the Money Comes From
FY 2015-2016: \$58,520,387



TRANSPORTATION

Airport

- We continue to see a steady increase in revenue annually due to increased military usage from the contract fuel program.
- Pressley Aviation continues to grow and is expanding its fleet of aircraft and provides pilot services to corporations that own aircraft, yet lack full-time pilot services. Pressley Aviation received its Federal Aviation Administration Part 141 certificate for training veterans last year and they are seeing more and more veterans take advantage of their flight training program.
- The terminal building has been a source of community pride since it was constructed. A Virtual tour is available on Google Maps or Google Earth. Travelers and pilots from outside our region can now see exactly what to expect when flight planning a trip to Stanly County and see why we are so proud of our facility.
- The Airport is an excellent training facility for many specialty military exercises. We are able to provide a variety of training opportunities that they typically only find in western regions of the country. Because of our proximity to Fort Bragg, Camp Lejeune, Camp McCall and other military installations, we provide a training location which saves a considerable amount of travel and money.

SCUSA

Operating statistics for FY 2014-2015:

- Passengers per hour (2.66)
- Cost per trip (\$18.14)
- Traveled 311,083 miles over 18,115 hours and provided 48,074 passenger trips



SCUSA Transportation's Vehicle Emergency Evacuation Training was highlighted at the 2015 North Carolina Public Transportation Association conference. Stanly County Emergency staff attended along with the Transit Director and offered a training scenario to participants from all across the state. It was one of the highest rated sessions according to post conference surveys.

Do I have to pay to ride SCUSA?

If a passenger does not have a sponsoring agency, then a fare is required. The county has been divided into zones with each zone having a different fare. Fares are minimal and have to be paid at the time of the trip. Fares for out of county trips are based on the destination. Call the office for more information.

DEPARTMENT DIRECTORY

Department	Telephone	Web	Department Head
AGRI-CIVIC CENTER	(704) 986-3666	www.stanlyciviccenter.com	Candice Moffitt cmoffitt@stanlycountync.gov
AIRPORT	(704) 982-9013	www.stanlycountyairport.com	David Griffin dgriffin@stanlycountync.gov
CENTRAL ADMINISTRATION	(704) 986-3600	www.stanlycountync.gov	Andy Lucas, County Manager alucas@stanlycountync.gov
CENTRAL PERMITTING	(704) 986-3057	www.stanlycountync.gov	Carol Almond ccalmond@stanlycountync.gov
COMMUNICATIONS	(704) 986-3700	www.stanlycountync.gov	Karen McDaniel kmcdaniel@stanlycountync.gov
COOPERATIVE EXTENSION	(704) 983-3987	stanly.ces.ncsu.edu	Lori Ivey lori_ivey@ncsu.edu
ECONOMIC DEVELOPMENT COMMISSION	(704) 986-3682	www.stanlyedc.org	Paul Stratos pstratos@stanlycountync.gov
ELECTIONS	(704) 986-3647	www.votestanlycounty.com	Kim Wilson kwilson@stanlycountync.gov
EMERGENCY SERVICES	(704) 986-3650	www.stanlycountync.gov	Brian Simpson bsimpson@stanlycountync.gov
FACILITIES MANAGEMENT	(704) 986-3697	www.stanlycountync.gov	Jerry Morton jrmorton@stanlycountync.gov
HEALTH DEPARTMENT	(704) 982-9171	www.health.co.stanly.nc.us	Dennis Joyner djoyner@stanlycountync.gov
INSPECTIONS	(704) 986-3667	www.stanlycountync.gov	David Harrington dharrington@stanlycountync.gov
LIBRARY	(704) 986-3766	www.stanlycountylibrary.org	Melanie Holles mholles@stanlycountync.gov
PLANNING & ZONING	(704) 986-3660	www.stanlycountync.gov	Michael Sandy msandy@stanlycountync.gov
REGISTER OF DEEDS	(704) 986-3640	www.stanlyrod.net	Suzanne Lowder, Register of Deeds slowder@stanlycountync.gov
SCUSA TRANSPORTATION	(704) 986-3790	www.stanlycountync.gov	Gwen Hinson ghinson@stanlycountync.gov
SENIOR SERVICES	(704) 986-3769	www.stanlycountync.gov	Becky Weemhoff bweemhoff@stanlycountync.gov
SHERIFF'S OFFICE	(704) 986-3714	www.stanlysheriff.org	George Burris, Sheriff gtburris@stanlycountync.gov
SOCIAL SERVICES (DSS)	(704) 982-6100	www.stanlydss.com	Tammy Schrenker tschrenker@stanlycountync.gov
SOIL & WATER CONSERVATION SERVICE	(704) 982-5114	www.stanlycountync.gov	Clint Brooks cbrooks@stanlycountync.gov
SOLID WASTE	(704) 986-3897	www.stanlycountync.gov	Jerry Morton jrmorton@stanlycountync.gov
TAX ADMINISTRATION	(704) 986-3619	www.stanlytax.com	Clinton Swaringen cswaringen@stanlycountync.gov
UTILITIES	(704) 986-3686	www.stanlycountync.gov	Donna Davis ddavis@stanlycountync.gov
VETERANS SERVICES	(704) 986-3694	www.stanlycountync.gov	Rod Barbee rbarbee@stanlycountync.gov