

**STANLY COUNTY
BOARD OF COMMISSIONERS
MEETING AGENDA
APRIL 16, 2018**

INFORMAL WORK SESSION – 5:30 P.M.

Closed Session: To consult with the county attorney in accordance with NCGS 143-318.11(a)(3) and to discuss economic development in accordance with NCGS 143-318.11(a)(4).

REGULAR MEETING - 6:00 P. M.

**Call to Order & Welcome – Chairman Burleson
Invocation & Pledge of Allegiance – Commissioner Efirm
Approval / Adjustments to the Agenda**

SCHEDULED AGENDA ITEMS

- 1. GHA AUTISM SUPPORTS PRESENTATION**
Presenters: Beth Olivieri & Dee Pankey-Thompson

- 2. NCDOT – HIGHWAY MAINTENANCE IMPROVEMENT PLAN (HMIP) PRESENTATION**
Presenter: Brett Canipe, NCDOT Deputy Division 10 Engineer

- 3. PRESENTATION OF THE SENIOR CENTER SATELITE STUDY**
Presenters: Jessica Hill & Katie Kutcher of Centralina COG

- 4. E-911- PUBLIC HEARING TO CONSIDER NAMING CRAWFORD-AUSTIN LANE**
Presenter: Karen McDaniel, E-911 Director

- 5. NATIONAL DAY OF PRAYER RESOLUTION**
Presenter: Commissioner Lawhon

- 6. COMMUNITY NURSING HOME ADVISORY COMMITTEE APPOINTMENTS**
Presenter: Andy Lucas, County Manager

7. CONSENT AGENDA

- A. Minutes – Regular meeting of April 2, 2018.**
 - B. Finance – Request approval of the attached vehicle tax refunds for March 2018.**
 - C. Health Dept. – Information related to a Community Health Grant application.**
 - D. Finance – Request approval of budget amendment # 2018-44.**
 - E. SCUSA/Senior Services – Request approval of budget amendment # 2018-45.**
-

PUBLIC COMMENT

BOARD COMMENTS, ANNOUNCEMENTS & COMMITTEE REPORTS

ADJOURN

The next regular meeting is scheduled for Monday, May 14th at 6:00 p.m.

Stanly County Board of Commissioners



Meeting Date April 16, 2018

Presenter: Beth Olivieri & Dee Pankey-Thompson

Consent Agenda	Regular Agenda
----------------	----------------

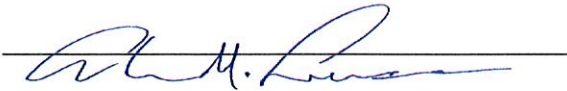
ITEM TO BE CONSIDERED

GHA Autism Supports Presentation

Subject

Requested Action

No action required. Information only.

Signature 
 Date: 04/09/2018

Dept Central Administration

Attachments: Yes No

Review Process

	Approved		Initials
	Yes	No	
Finance Director	<input type="checkbox"/>	<input type="checkbox"/>	
Budget Amendment Necessary	<input type="checkbox"/>	<input type="checkbox"/>	
County Attorney	<input type="checkbox"/>	<input type="checkbox"/>	
County Manager	<input type="checkbox"/>	<input type="checkbox"/>	
Other:	<input type="checkbox"/>	<input type="checkbox"/>	

Certification of Action

Certified to be a true copy of the action taken by the Stanly County Board of Commissioners on

Tyler Brummitt, Clerk to the Board Date



Stanly County Board of Commissioners

Meeting Date April 16, 2018

Presenter: Brett Canipe, NC DOT, Deputy Div 10 Engineer

Consent Agenda	Regular Agenda
	2

ITEM TO BE CONSIDERED

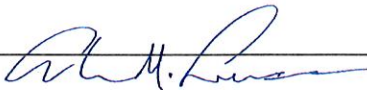
NC DOT – Highway Maintenance Improvement Plan (HMIP) Presentation

Per the Board’s request, a representative from NC DOT will be present to discuss the State’s HMIP and address questions and concerns related to the Plan.

Subject

Requested Action

Information only. No action required.

Signature: 
 Date: 04/09/2018

Dept Central Administration

Attachments: Yes No

Review Process

	Approved		Initials
	Yes	No	
Finance Director	<input type="checkbox"/>	<input type="checkbox"/>	
Budget Amendment Necessary	<input type="checkbox"/>	<input type="checkbox"/>	
County Attorney	<input type="checkbox"/>	<input type="checkbox"/>	
County Manager	<input type="checkbox"/>	<input type="checkbox"/>	
Other:	<input type="checkbox"/>	<input type="checkbox"/>	

Certification of Action

Certified to be a true copy of the action taken by the Stanly County Board of Commissioners on

Tyler Brummitt, Clerk to the Board Date



Stanly County Board of Commissioners

Meeting Date: Monday, April 16, 2018
 Presenter: Centralina COG- Jessica Hill and
 Katie Kutcher

Consent Agenda | Regular Agenda

3

Presentation Equipment: Lectern PC* Lectern VCR Lectern DVD Document Camera** Laptop***

Please Provide a Brief Description of your Presentations format: _____

* PC is equipped with Windows XP and Microsoft Office XP (including Word, Excel, and PowerPoint), Internet connectivity and Network connectivity for County Employees.

** If you have need to use the Document Camera and zoom into a particular area, if possible please attach a copy of the document with the area indicated that you need to zoom into. A laser light is available to pinpoint your area of projection.

*** You can bring in a laptop that will allow video out to be connected at the lectern – set display to 60Mhz.

ITEM TO BE CONSIDERED

Presentation of the Senior Center Satellite Study that was conducted by Centralina Council of Government (Planning Department and Aging Department) at the request of the Stanly County Board of Commissioners.

Subject

This presentation includes the analysis of senior population demographic trends and mapping, public engagement, survey development, cost comparisons and final report findings.

Requested Action

Presentation is for information only. No action required at this time.

Signature: _____

Dept. _____

Date: _____

Attachments: Yes No x

Review Process

Certification of Action

	Approved		Initials
	Yes	No	
Finance Director	—	—	
Budget Amendment Necessary	—	—	
County Attorney	—	—	
County Manager	—	—	
Other:	—	—	

Certified to be a true copy of the action taken by the Stanly County Board of Commissioners on

 Tyler Brummitt, Clerk to the Board Date



Senior Center Service Analysis Report

Stanly County Senior Services



This page intentionally left blank.



Contents

I. Introduction.....	4
II. Background	4
III. Evaluation Criteria	8
IV. Options.....	8
V. Methodology	8
VI. Evaluation of Options	12
VII. Peer Facility Comparison.....	23
VIII. Conclusions	36
IX. Recommendations	38
X. Appendixes.....	42



This page intentionally left blank.

I. Introduction

In 2015, nearly 2.1 million North Carolinians were 60 years or older, representing 20.9% of the state's population. In Stanly County, 24.2% of adults were 60 years or older in 2015. By 2037, it is expected that senior adults will make up 31% of the county's population.

Recognizing an increased need in the county for senior services, the Stanly County Senior Services Department investigated the need for additional senior services and programs with the assistance of Centralina Council of Governments (CCOG).

Table 1: Stanly County & NC Population Overview, 2010-2037

	Population						
	2010	2015	2020	2025	2030	2035	2037
Total County Population	60,555	61,169	64,259	67,226	70,196	73,164	74,352
County Population 60+	13,338	14,826	17,028	19,439	21,273	22,658	23,022
County % of population 60+	22.0%	24.2%	26.5%	28.9%	30.3%	31.0%	31.0%
Total State Population	9,574,344	10,046,467	10,619,432	11,192,454	11,759,744	12,327,153	12,553,271
State Population 60+	1,788,062	2,099,527	2,449,727	2,779,525	3,044,153	3,262,079	3,326,351
State % of population 60+	18.7%	20.9%	23.1%	24.8%	25.9%	26.5%	26.5%

Source: North Carolina OSBM, Standard Population Estimates, Vintage 2016 and Population Projections, Vintage 2017.

II. Background

The Stanly County Senior Services Department operates a Senior Center at 283 North Third Street in Albemarle to enhance the quality of life for older adults in Stanly County by providing a range of services, programs, supports, and opportunities for adults 55 years and older. Senior Centers are places that bring together older adults who seek to be engaged in their communities and create environments that encourage seniors to interact with others, get out of the house regularly, and enjoy themselves. Senior Centers are an important element of a healthy aging-in-place strategy for loved ones as they provide the services older adults need to be healthy, happy, and as independent as they can be.

A. Project Area

Stanly County, North Carolina has a total area of 405 square miles, or 259,200 acres. The County is home to ten municipalities and is divided into a total of 13 US Census Tracts. According to the Census, the County's 2017 total population was estimated at 60,791. This represents a slight increase from its 2010 total population of 60,585. The 2010 population density was 149.6 persons per square mile, or .23 persons per acre. Figure 1



B. Senior Center Current Users

Of the 2,436 current users of the Senior Center, 2,032 reside within Stanly County (over 83%). 1,316 current users reside within a 5-mile radius of the facility (about 65%) in Albemarle. An additional 500 users reside within the 10-mile radius (or nearly 75%). Figure 2

The Stanly County Senior Services Department contracted with CCOG to investigate the need for satellite senior services and programs or possibly a second Senior Center location to provide the desired level of service to Stanly County's senior adults. The project period began in October 2017 and ended in March of 2018 with a subsequent presentation to the Stanly County Commission of CCOG's findings. This study was deemed necessary due in part to Stanly County's aging demographic and the significant proportion of the senior population.

C. Senior Population

An aging profile is provided below in Table 2, showing Stanly County's population divided into six age groups or cohorts. The values shown come from 2016 Census estimates and 2036 projections. It is noteworthy that the two cohorts showing the highest percentage of change by far are seniors, 65 and above. While the percentage of change will tend to be higher when the cohort total population is smaller, the relatively large cohorts of 60+ and 65+ show significant increase, growing 6% to 7% in one generation. These results clearly indicate that Stanly County population is expected to be much grayer in the future.

Table 2: Stanly County Aging Profile - 2016

Ages	2016		2036		% Change (2016-2036)
	#	%	#	%	
Total	61,751		73,758		19%
0-17	13,160	21%	14,075	19%	7%
18-44	20,198	33%	23,149	31%	15%
45-59	13,174	21%	13,698	19%	4%
60+	15,219	25%	22,836	31%	50%
65+	11,152	18%	18,341	25%	64%
85+	1,250	2%	2,227	3%	78%

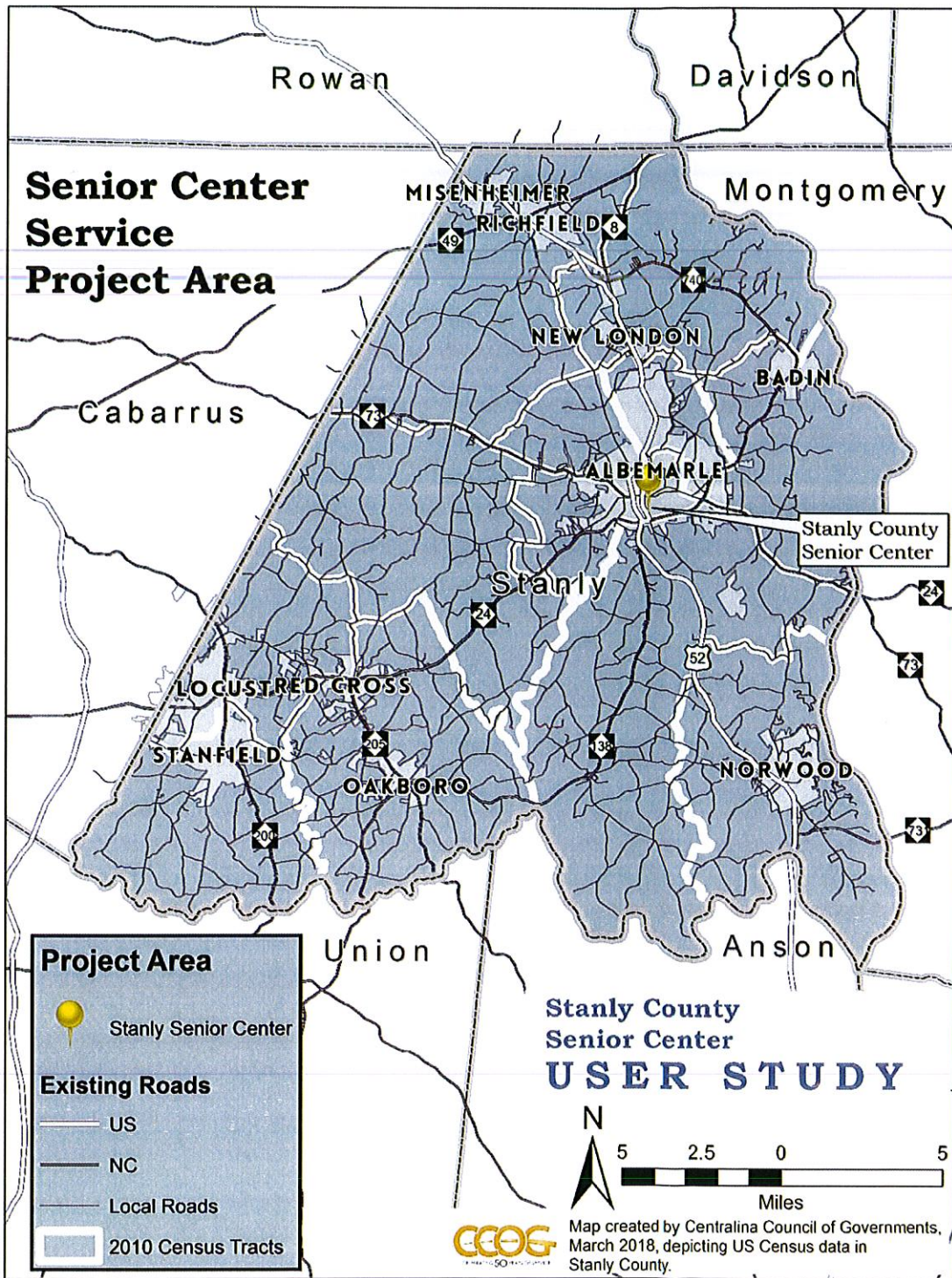


Figure 1

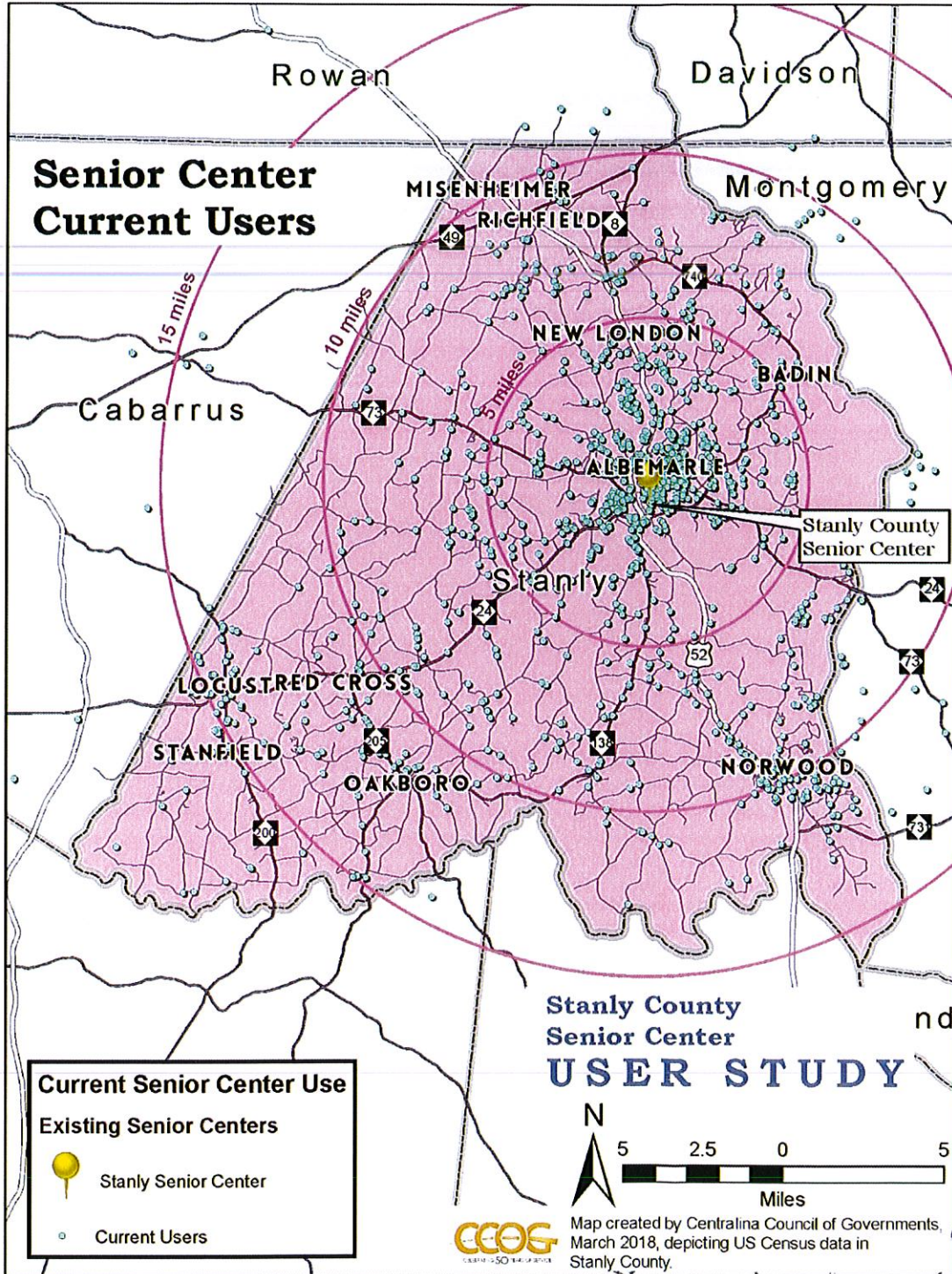


Figure 2

III. Evaluation Criteria

The purpose of the Senior Services Department is to enhance the quality of life for older adults in Stanly County by providing a range of services, programs, supports, and opportunities for adults 60 years old and older. To provide these services the Senior Services Department operates the Senior Center in Albemarle. To identify the need for an additional facility, or facilities, the following criteria of a 'level of service' was used to evaluate the County's options.

- Criteria 1: Proximity to senior population
- Criteria 2: Accessibility by senior population
- Criteria 3: Services, programs, and activities available to senior population

IV. Options

This assessment evaluated two options for Stanly County – Status Quo and Expand. The Status Quo option is a continuation of existing services in which the County continues to only operate the Albemarle senior center facility. The Expand option is a build scenario in which the County would expand its senior services to another facility or facilities in a second location other than Albemarle.

V. Methodology

To evaluate the two options, Status Quo and Expand, CCOG researched and analyzed data for the three evaluation criteria. Data was collected from the US Census Bureau; public engagement; and peer senior center comparisons to make appropriate recommendations to Stanly County. In addition, five peer communities were identified to serve as comparisons for services and facilities.

A. Data Sets

The population and demographic data comes from the 2000 and 2010 US Decennial Census, and the American Community Survey (ACS) 2012-2016, five-year estimates. County population estimates, and projections are taken from the North Carolina Office of State Budget and Management (OSBM) along with summary tables prepared by Swarna Reddy for the North Carolina Division of Aging and Adult Services (NC DAAS, Dec. 2017).

All maps were prepared by Centralina Council of Governments. Stanly County Senior Center provided addresses of their current users, which were then geocoded. All road-related data comes from the North Carolina Department of Transportation (NCDOT). Other geographic data sets used to assemble the maps are provided by the Stanly County



GIS (Geographic Information Systems managed by Stanly County Government). Additional trail data is sourced from the Carolina Thread Trail.

B. Public Engagement

Public engagement is critical to identifying key components to successful implementation of either option, Status Quo and Expand. It is imperative to understand the needs, wants, and expectations of the current senior population and future senior population. Two methods of public engagement were used for this assessment: Open Houses and Public Survey.

Open House Events

The main purposes of the Open House events are to educate residents and stakeholders about senior services in Stanly County, to provide an opportunity for residents to interact with County staff and elected officials, and to gather public input via survey.

Two Open House events were held on Tuesday, February 20, 2018. The first Open House was held at Locust City Hall from 9:00 am – 11:00 am and the second event was held at Norwood Town Hall from 2:00 pm – 4:00 pm. Both Open Houses were designed to be drop-in events. Stanly County residents were invited to attend the Open Houses to learn about the variety of existing services for seniors offered by the County and to give input on what types of services are needed in Stanly County. The informational boards can be found in Appendix B.

Open House participants were asked to sign in, view informational boards, complete a survey and talk with staff and other participants. The five boards included the following information: welcome and instructions, study purpose, a Stanly County map showing change in senior population from 2000 to 2010, a Stanly County map showing senior population density, and projected population change over time in the County between 2016-2036.

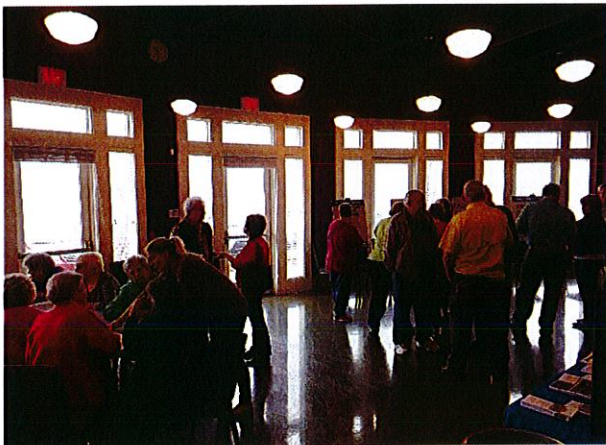
Table 3: Open House Participation

At Open House	Locust Open House	Norwood Open House
# of participants	50	18
# of surveys completed	49	10

The February Open Houses were publicized through a variety of platforms, including:

- A public service announcement (PSA) was recorded and aired on the local radio station
- An article ran in the Stanly New and Press
- The Stanly County Senior Services bi-monthly newsletter
- An email went to over 700 individuals on Stanly County Senior Services' listserv
- Flyers were distributed to and/or posted at:
 - Stanly County Commons
 - Four congregate nutrition sites
 - Stanly County Senior Center in Albemarle
 - West Stanly Senior Center in Locust
 - Two boards – Advisory Board and Friends of the Senior Center Board
 - Two luncheons – Friends of Senior Center Annual Luncheon and Monthly Senior Center Luncheon
 - Stanly County Senior Center Facebook page

Flyers for both the Locust and Norwood Open Houses can be found in Appendix A.





Public Survey

Surveys are helpful tools to obtain information from community members who use the Stanly County Senior Center as well as other members of the community who may not use the Senior Center but have an interest in the services or programs. The Stanly County Senior Center survey was designed to gauge opinions and receive feedback on current programs and activities, and to gauge the need for additional senior programs and activities or possibly a second or satellite Senior Center location.

The survey was available online on the SurveyMonkey platform and in paper format available at the Stanly County Senior Center, two Open House Events, and was given to Senior Center partners and similar organizations (see list below). The survey was available from February 6 – March 8, 2018. Over the course of its availability, 423 respondents completed the survey.

Of the sample population surveyed, 42.11% of respondents resided in Norwood, 23.31% in Albemarle, and 16.54% in Locust.

The survey determined that 93.93% of respondents knew about the Stanly County Senior Center in Albemarle, and 67.31% of respondents knew about the services it offers.

Survey instrument and results can be found in Appendix C & D.

Paper copies of the survey were distributed to:

- Those attending the Feb. Monthly Senior Center Luncheon
- Participants at the four congregate nutrition sites
- Stanly County Senior Center in Albemarle
- West Stanly Senior Center in Locust
- Advisory Board members (several board members asked for additional copies to distribute on their own)
- Email newsletter group of approximately 700 individuals through a link in the newsletter
- Stanly County Senior Center Facebook friends via the Senior Center's Facebook page

VI. Evaluation of Options

To better understand the senior service needs in the surrounding area, and how current and potential facilities can best meet those needs, a review was made of various geographic and demographic conditions and trends. These are illustrated and compared through a series of maps and tables. In addition, a public survey to gauge the need for additional services, programs, and activities, which could include an additional facility or facilities.

A. Criteria 1: Proximity to Senior Population

Proximity refers to the nearness of the facility's physical location to provide services to the County's senior population. To understand physical nearness, senior population density by census tract (senior population 65+ per acre), senior population change from 2000 to 2010 by census tract, and high growth areas were mapped. Additionally, nearness can be a perception of distance and willingness to travel a certain distance. The public survey included questions related to distance and willingness to travel to/from a senior center facility.

Senior Population Density - In 2010, the highest densities of senior population 65+ (person per acre) were located in the northeast, southwest, and southeast areas of the County including the communities of Albemarle, Locust, Norwood, Badin, Red Cross, and Oakboro.¹ Figure 3

Senior Population Change – From 2000 to 2010, the northwest, northeast and southwest areas of the County experienced the most significant increase in senior populations. Over 15% increase over the 10-year period in these areas which include the communities of Misenheimer, Richfield, Badin, Locust and Red Cross.^{2 3} The center area of the County, Albemarle and surround area, experienced a decrease in senior population in the same 10-year time period. Figure 4

¹ For purposes of this study, population of the County was considered by US Census Tract. Because Census Tracts vary widely in their total area, accurate comparison of relative populations between tracts is accomplished by considering population density (people per acre). Otherwise, some tracts might appear more populated than others simply because the tract area is larger.

²To provide a snapshot of the rate by which the portion of seniors in each tract is changing relative to other age groups in the county, the total numbers for seniors (65+) in each tract were drawn from the 2000 and 2010 Census, and the difference between the two (whether positive or negative) was then compared to the County population. While some tracts show a decrease in the proportion of seniors relative to other age groups, most tracts indicate a growing senior section of the population.

³ Note: The area of census tracts can vary from one decennial census to the next, as has occurred in Stanly County between the 2000 and 2010 Census. To account for this, the area of the 2010 tract is applied to both years using an approximation of the 2000 values based on the overall density of the tract in 2000.

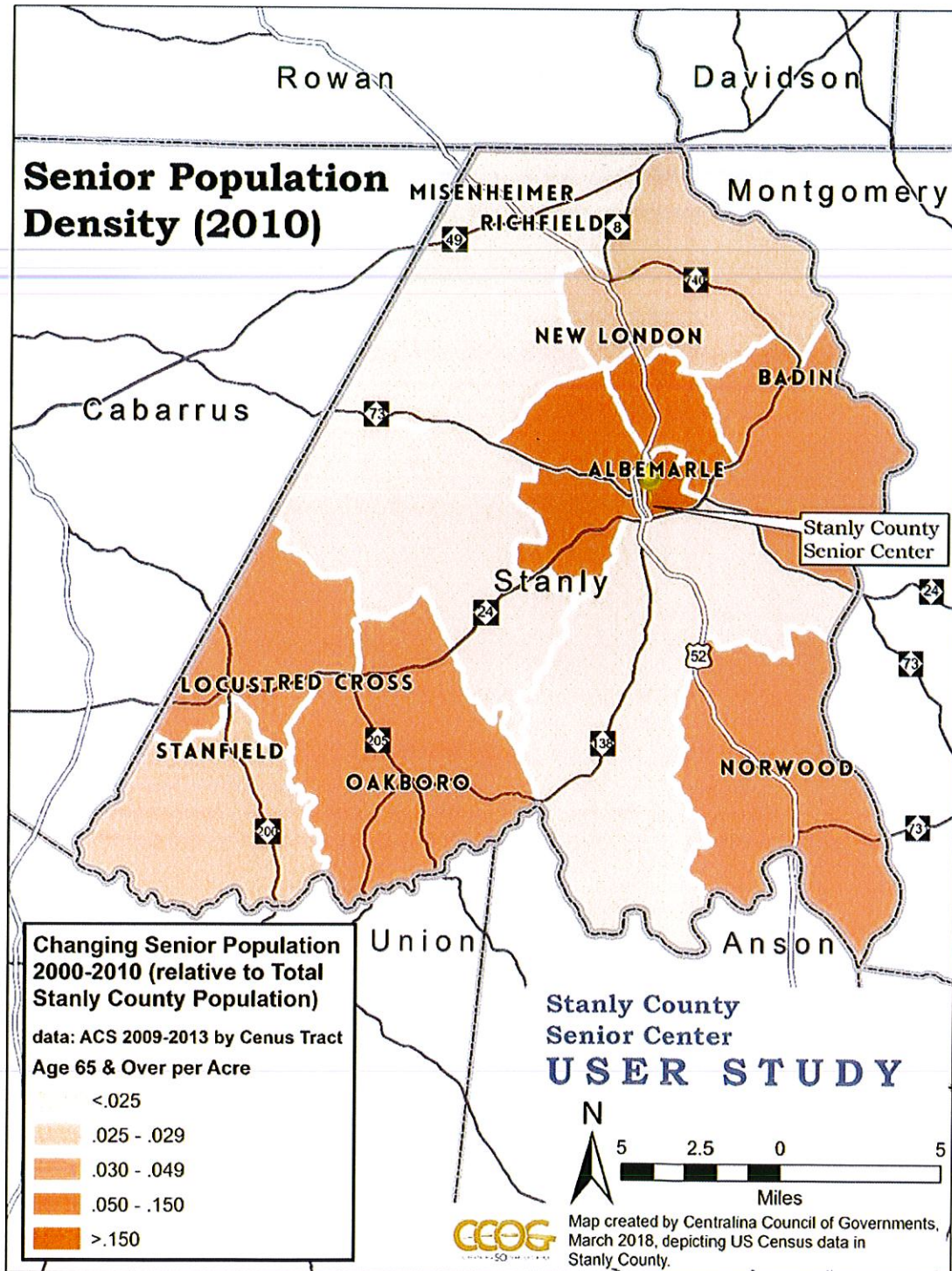


Figure 3

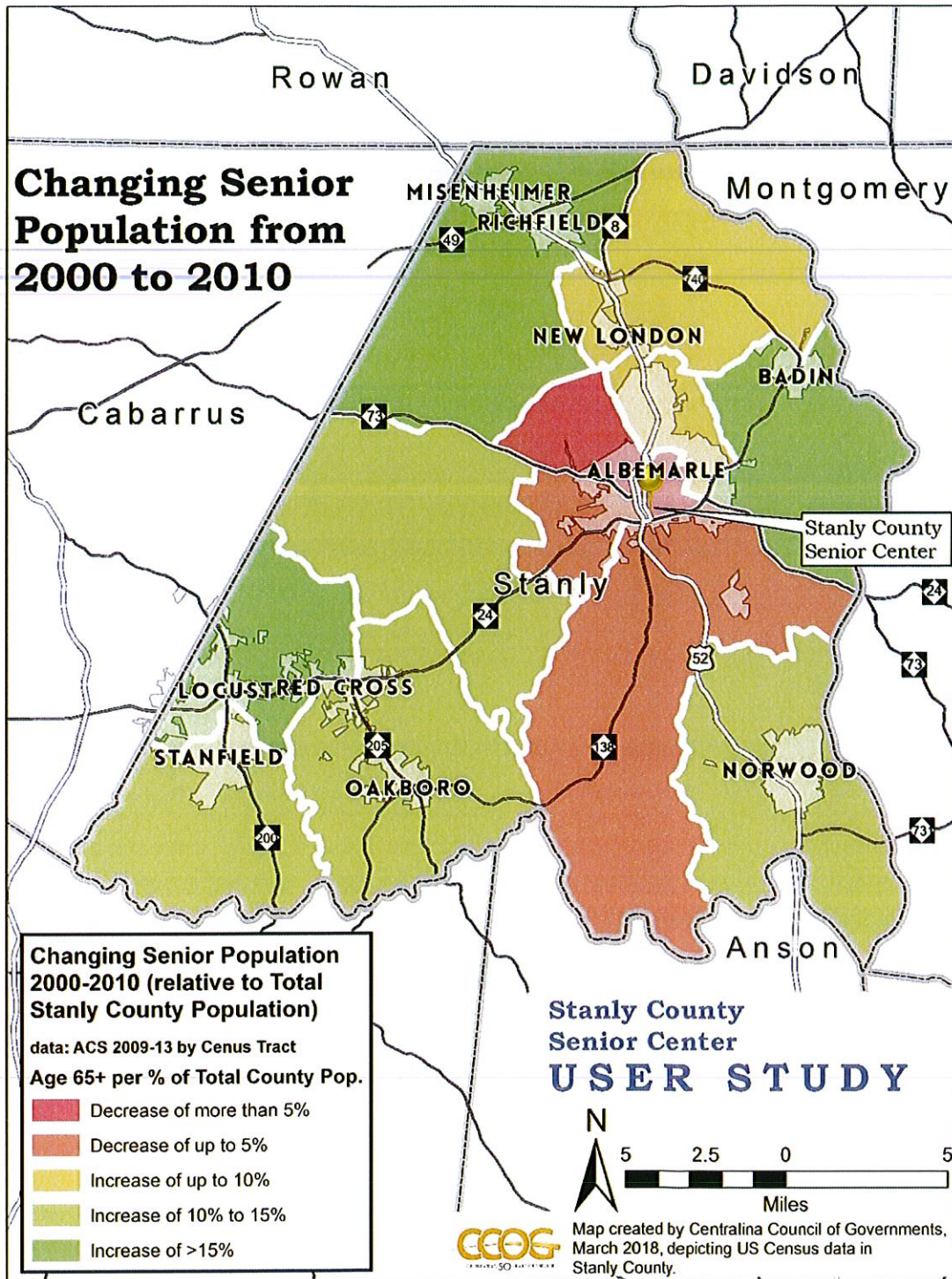


Figure 4



High Growth Areas - Stanly County Government provided map data identifying the areas where they anticipate the highest rates of population growth. These primary and secondary growth areas are concentrated around the municipalities and major roads. They cluster into three major High Growth Areas (Figure 7):

- North: Albemarle and the corridor north along US 52, along on NC 740 to Badin.
- Southeast: the Town of Norwood and its surroundings along the Yadkin River and US 52.
- Southwest: the NC 24, 200 and 205 corridors toward Rocky River.

Perception & Willingness to Travel - Based on survey responses, distance is a deterrent. Over 53% of survey participants reported that they don't use the Senior Center, and the primary factor stated, over 76%, was that the senior center is too far away from them (Figure 5). Of the respondents that would be willing to use a Stanly County Senior Center, over 68% stated that they would use a Senior Center facility if the center was closer to them (Figure 6). Nearly 50% of respondents stated that they would be willing to travel up to five miles to a Senior Center facility, while an additional 30% would be willing to travel up to 10 miles to a Senior Center facility.

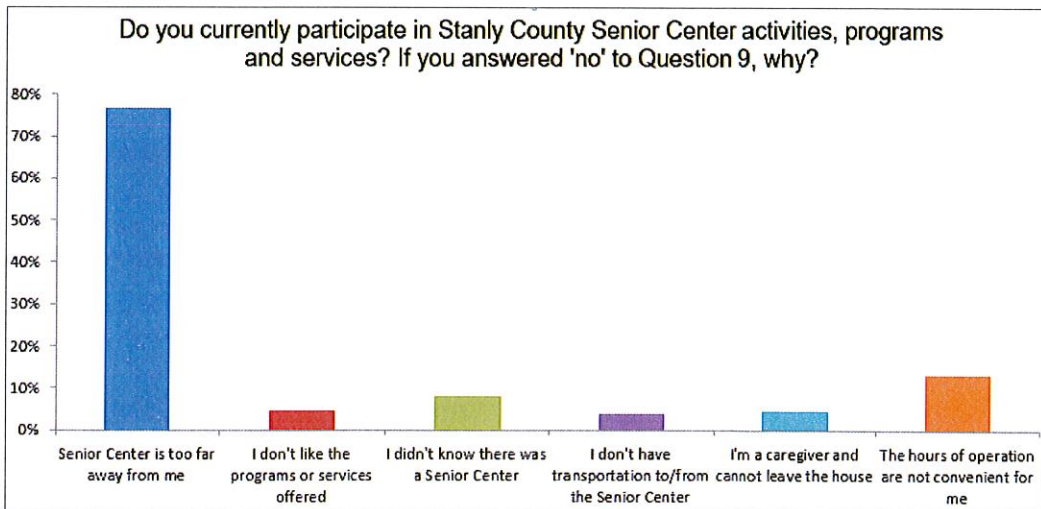


Figure 5: Survey Question 11 Responses

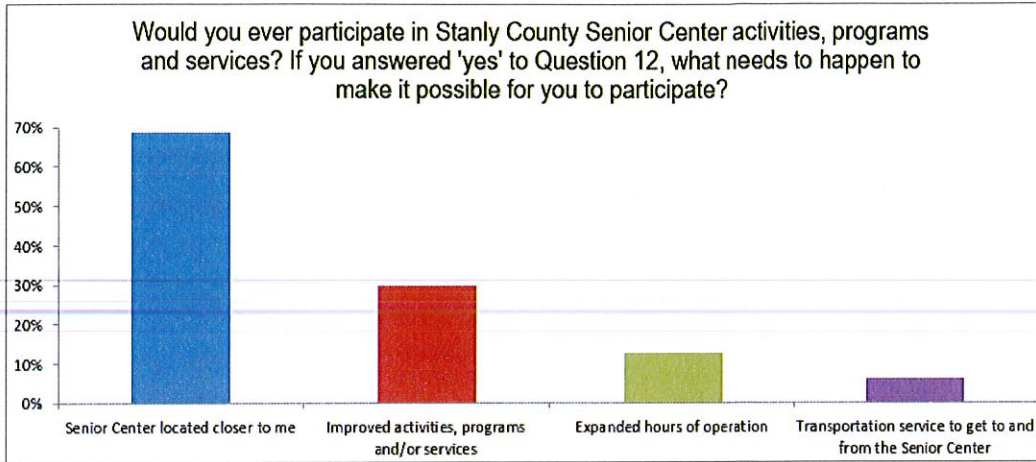


Figure 6: Survey Question 13 Responses

Table 4: Distance from Center to Center of Community displays the distance in road miles from center to center of a community. The driving distance to the existing Stanly County Senior Center in Albemarle is greater than 5 miles to/from all other communities in the County. While Locust, Misenheimer, Norwood, Oakboro, Red Cross, Richfield, and Stanfield are all greater than 10 miles driving distance to/from the existing senior center.

Table 4: Distance from Center to Center of Community

	Albemarle	Badin	Locust	Misenheimer	New London	Norwood	Oakboro	Red Cross	Richfield	Stanfield
Albemarle		6.7	15.1	12.1	7.2	11.8	13.1	11.4	10.3	17.0
Badin	6.7		21.8	12.7	7.9	14.6	19.8	18.1	10.9	23.7
Locust	15.1	21.8		20.1	20.2	21.1	7.5	4.1	19.4	1.9
Misenheimer	12.1	12.7	20.1		5.0	22.5	22.1	19.1	2.2	22.5
New London	7.2	7.9	20.2	5.0		18.5	19.4	16.5	3.2	22.0
Norwood	11.8	14.6	21.1	22.5	18.5		13.6	17.4	20.8	20.4
Oakboro	13.1	19.8	7.5	22.1	19.4	13.6		3.8	20.7	6.8
Red Cross	11.4	18.1	4.1	19.1	16.5	17.4	3.8		17.4	6.1
Richfield	10.3	10.9	19.4	2.2	3.2	20.8	20.7	17.4		21.3
Stanfield	17.0	23.7	1.9	22.5	22.0	20.4	6.8	6.1	21.3	

Distance = Road Miles

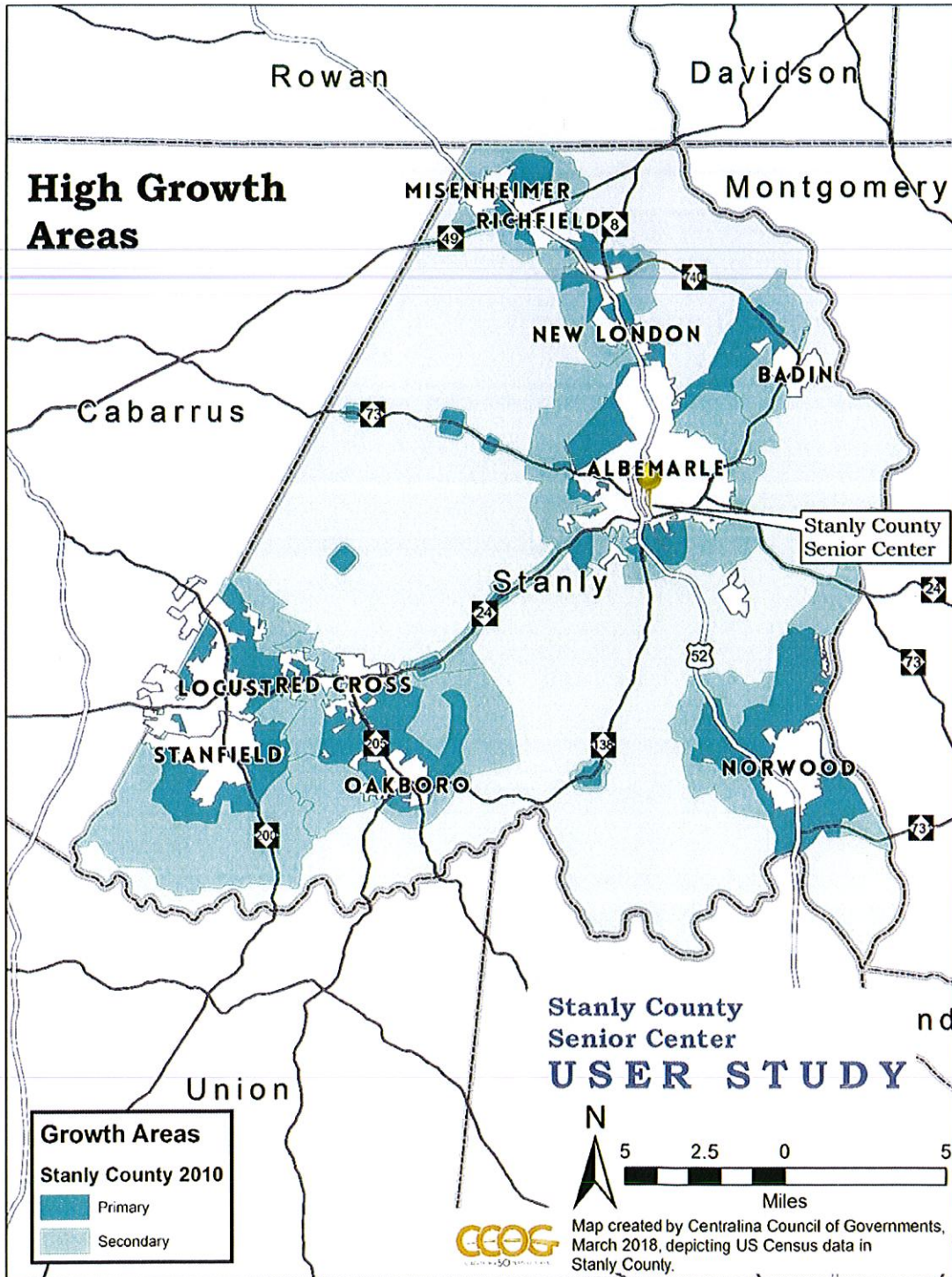


Figure 7

B. Criteria 2: Accessibility by Senior Population

Accessibility is the extent to which the senior population can access the senior center. Stanly County Senior Center and Senior Services provides programs and services to improve the quality of life for older adults in Stanly County and assist those residents to age in place. Many of the direct services offered by Stanly Senior Services are funded through the Home and Community Care Block Grant, which is intended to serve older adults regardless of income, while prioritizing those most in need. The senior center provides many activities at no cost to participants, and services that are funded by the Home and Community Care Block Grant are provided at no cost to the participant. Consumer contributions are accepted.

To measure accessibility, we analyzed poverty level, mobility, and public transportation options. In addition, survey participants were asked questions regarding their willingness to participate in Senior Center services, programs, and activities, and respondents identified accessibility as a requirement.

Poverty - Figure 8 shows the percentage of the general population in poverty across Stanly County. The map is not age specific; however, the map could be used to identify areas of the county that may be more at-risk or have a higher population of residents in need.

According to the 2016 American Community Survey, 5.8-7.5% of the population in Locust over 65 years old lived in poverty while 8.7-10.8% of the population over 65 years lived in poverty in Norwood. Meanwhile, 13.2-15.4% of Albemarle's senior community face poverty.

Mobility - Stanly County has provisions for multiple means of transportation. US 52 connects runs the entire north-south distance of the county, connecting the communities of Misenheimer, Richfield, New London, and Norwood directly to the Albemarle facility. While Locust, Red Cross and Badin can directly reach the facility via NC 24, Stanfield and Oakboro can also reach the facility along NC highways. Within the municipalities, one can take advantage of extensive networks of sidewalks and crosswalks as well as bicycle facilities. Bike routes and greenways connect urban areas and other destinations. The County is also served by the on-call transportation service SCUSA (Stanly County Umbrella Services Agency). Figure 9

Public Transportation Options - SCUSA is the demand response transportation provider in Stanly County. SCUSA offers public transportation by appointment to medical appointments, shopping, human service agencies, nutrition sites, and general purposes trips for all Stanly County citizens. Public riders pay a fare of \$1.50-6.50 (varies by origin



and destination); agency-sponsored trips are provided at no cost to the rider (i.e. Medicaid, Home and Community Care Block Grant, and Rural General Purpose, etc.)

Older Adult Services in Stanly County (O.A.S.I.S.) is a small volunteer based Non-Profit Organization that provides transportation to doctors for Stanly County residents age 60 and older. O.A.S.I.S. is part of United Way of Stanly County.

Participation – While the current participation in activities was only 46.75%, an overwhelming majority of respondents expressed interest in participating. Surveyed individuals expressed interest in participation in the activities offered at Stanly County Senior Center. When asked “Would you ever participate in Stanly County Senior Center activities, programs, and services?”, 94.15% of respondents answered “Yes.”

To gauge the barriers to participation in Stanly County Senior Center activities, participants answered what would encourage more active participation in activities: 68.5% of respondents answered that if the senior center was located closer to them, 29.8% answered improved activities, programs, and/or services, and 12.7% answered expanded hours of operation, and 6% answered if there was transportation services to get to and from the senior center would increase their participation.

When asked about another senior center location, 77.66% of respondents answered that they would participate in senior activities, programs, and services if they were offered in a location other than Albemarle. When asked where they would prefer the activities and programs to be located in Stanly County, 55.63% of respondents chose Norwood and 27.65% elected Locust.

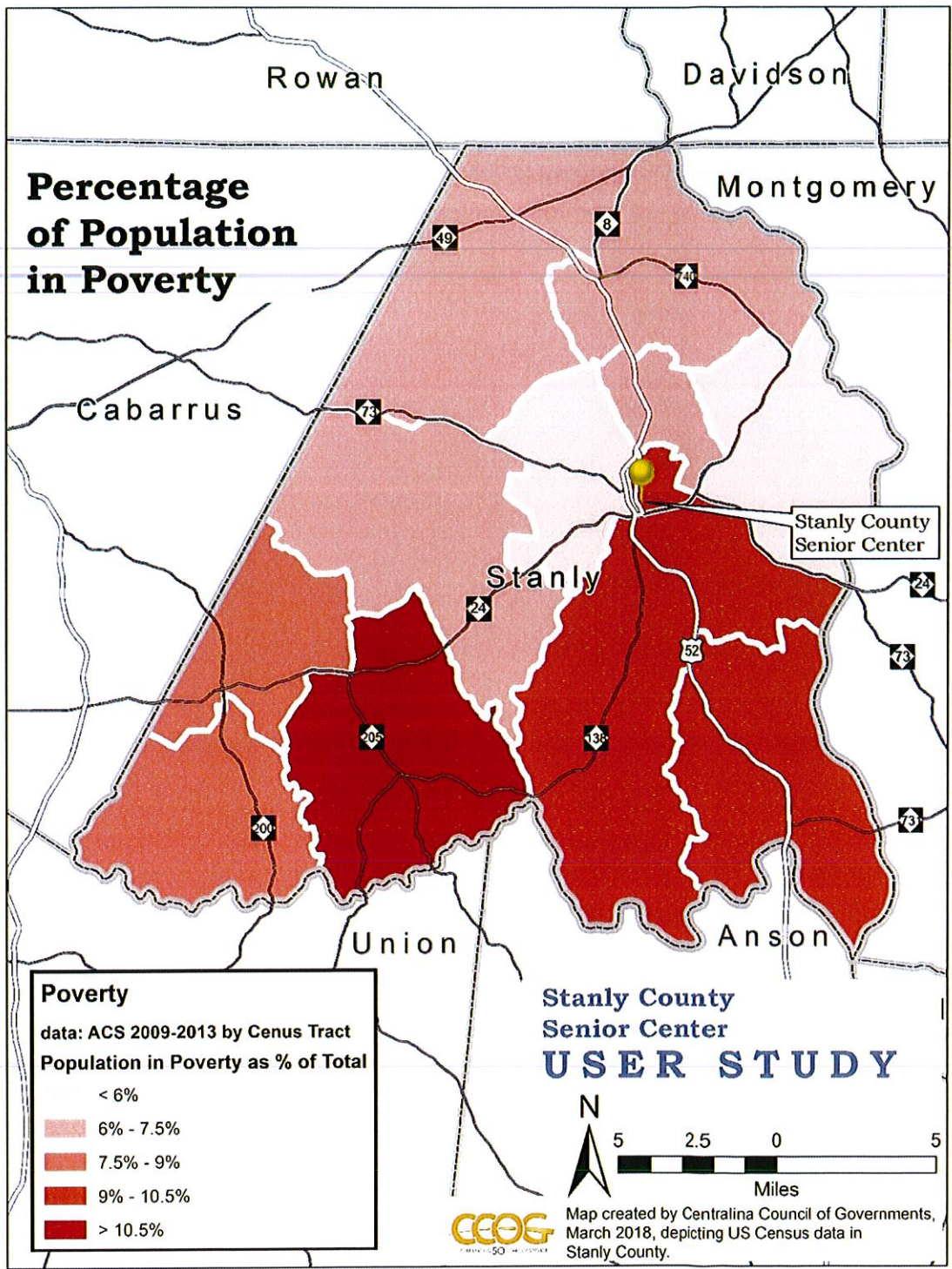


Figure 8

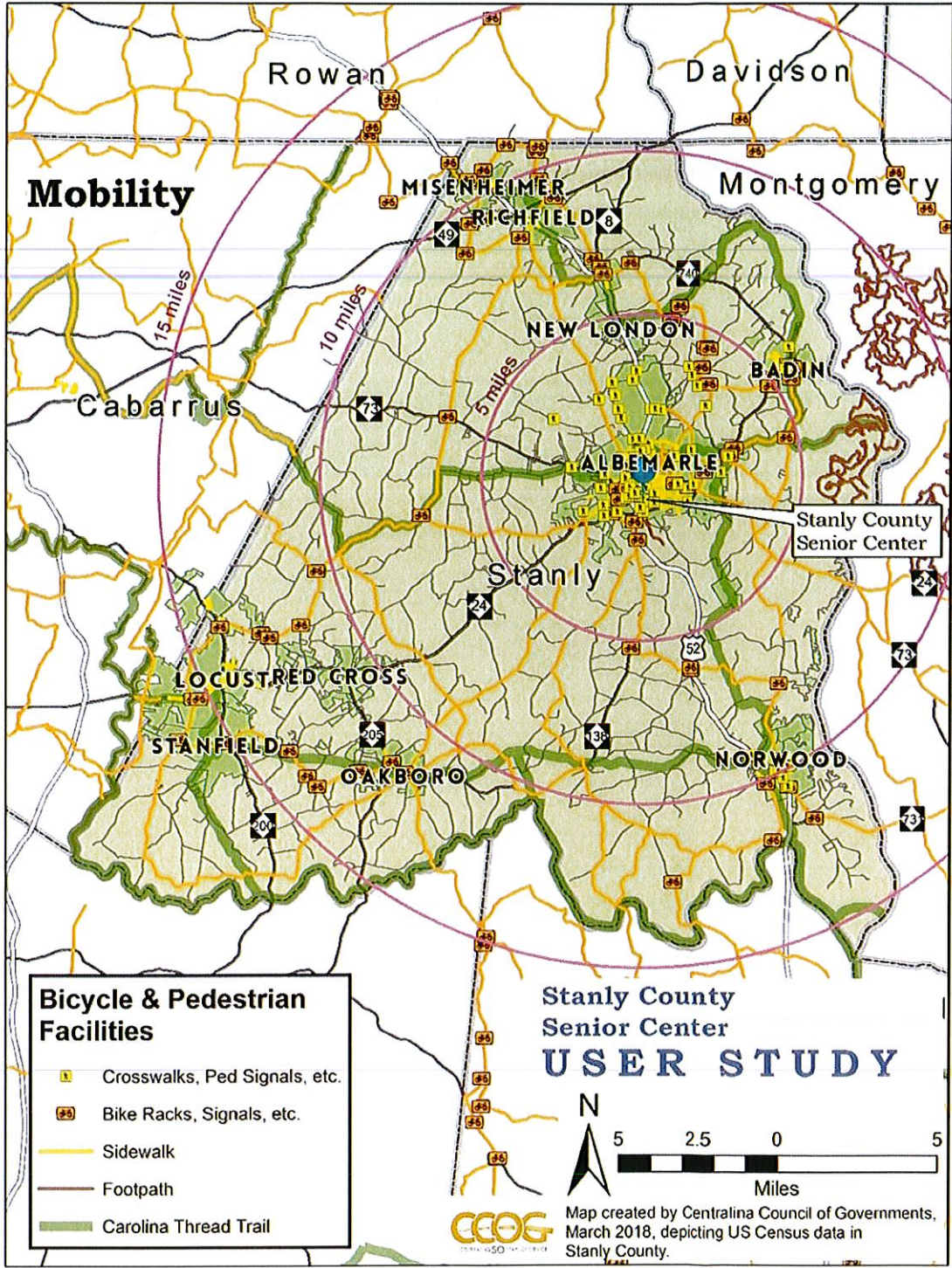


Figure 9

C. Criteria 3: Services, Programs, and Activities available to Senior Population

Summarizing the current programs, services, and activities provides necessary background information and perspective through which to interpret survey results. Survey results from the 2015 and 2016 Stanly County Senior Center Program, Activities, and Services Interest Survey were reviewed to indicate which programs and services receive the most use and to determine what programs and services were most desired through the survey instrument.

Current Services, Programs, and Activities - Stanly County Senior Center offers educational and social programs including fitness and health programs, educational courses, day-trips, legal assistance, and various clubs. These programs and services are designed to incorporate a healthy aging-in-place strategy for an aging loved one and improve their quality of life.

The programs and services that receive the most use and are currently offered include: exercise, monthly luncheons, trips, SHIP, the Tax Aide program, cards/game (Bridge, Duplicate Bridge, Bunco, Canasta), Arts & Crafts, Book Club, Veterans Club, dance classes, and all HCCBG services (In-Home Services, Congregate and Home-Delivered Meals, Transportation and Information and Assistance).

Desired Services, Programs, and Activities - In examining the results of the public survey and comparing data with previous surveys over the past 3 years, most users of the current Senior Center determined the need for additional programs/services in the categories of nature, fitness/recreational, arts programs, social activities, performing arts and educational programs, and adding more day and overnight trips in their offerings.

Under the 'Nature' category, participants wanted to see more to do with hiking, boating, and information sessions about animals/plants. Under 'Fitness/Recreational,' there is a need for more chair volleyball, ladder golf, bocce ball, Tai Chi, shuffle board, and pickle ball. 'Arts Programs' saw demand for woodworking, drawing, painting, and art classes. 'Social Activities' included a demand for more cards/games, singles dance, an arthritis support group, a caregiver support group, a diabetes support group, and bingo. 'Performing Arts' has a demand for social dances and theatre/drama club. Finally, 'Educational Programs' could include more cooking, digital camera operations, gardening, job training, computer training, retirement planning, and SHIP.



VII. Peer Facility Comparison

A. Methodology for Comparison:

CCOG reached out to the North Carolina Division of Aging and Adult Services, and they provided a complete list of Senior Centers in North Carolina with satellite sites. CCOG then identified those that were also “public” centers, indicating affiliation with local government as opposed to private non-profit centers. CCOG conducted a demographic evaluation of potential peer county census data to compare total county population and percentage of the 65+ population. CCOG then identified if the senior center or centers in each potential peer county had a designation of excellence, merit, or no designation. These factors helped inform the decision and selection of Sampson County and Richmond County as the two counties outside of the region for the peer comparison.

Iredell County and Cabarrus County were selected as the two peer counties in the Centralina Region. Iredell County has 2 certified centers of excellence and houses the Iredell Council on Aging, which operates many of the senior programs and services that Stanly Senior Services provides such as the Senior Nutrition Program, Transportation and Family Caregiver Program. Cabarrus County was selected as a county with 2 uncertified senior centers in part due to the proximity to Stanly County.

CCOG had a discussion with Stanly Senior Center on March 16, 2018 to finalize the selection of Sampson, Richmond, Iredell, and Cabarrus counties for the peer senior center comparison.

In addition, CCOG added Granville after learning of similarities in Senior Center programming and Senior Services operations.

B. Senior Center Comparison

Figure 10: Senior Center Comparison Summary Table

County	Total Population	Senior Population (over 65)	Senior Center "Type"	Center Designation
Stanly	60,791	18.3%	Public	1 Center of Excellence
Cabarrus	201,590	12.9%	Public	2 uncertified centers
Iredell	172,916	15.2%	Non-Profit <i>(however, houses Council on Aging which operates in a similar fashion to Stanly Senior Services)</i>	2 Centers of Excellence
Granville	59,031	16.4%	Public	1 Center of Excellence (2 satellites)
Sampson	63,124	16.8%	Public	1 Center of Excellence (1 satellite)
Richmond	44,939	17.1%	Public	2 Centers of Excellence (2 satellite sites)



Cabarrus County Profile

County	Total Population	Senior Population (over 65)	Senior Center "Type"	Center Designation
Stanly	60,791	18.3%	Public	1 Center of Excellence
Cabarrus	201,590	12.9%	Public (Parks & Recreation)	2 Uncertified Centers

Contact information:

Londa Strong, Director, Cabarrus County Active Living & Parks
LAStrong@cabarruscounty.us or 704-920-3354

Locations:

- Concord Senior Center** - 331 Corban Ave SE, Concord, NC, 28025
Designation: Uncertified
Year Opened: 1991
Hours of Operation:
 Monday-Thursday: 8:00 AM – 9:00 PM
 Friday: 8:00 AM – 5:00 PM
 Saturday: 8:00 AM – 12:00 PM
 Selected Fridays and Saturdays: 6:30 PM – 10:00 PM
- Mt. Pleasant Senior Center** - 8615 Park Drive, Mount Pleasant, NC, 28124
Designation: Uncertified
Year Opened: 2006
Hours of Operation: Monday-Friday: 8:00AM – 5:00 PM

Budget Information: *source(s) of operational funding for their main center and their satellite locations.*

Senior Center Operations, Senior Center General Purpose funds, additional county funds.

Relation to Senior Nutrition Program: *Co-located with a senior nutrition program*

The Congregate Senior Nutrition Program is operated by staff with the Cabarrus County Division of Human Services. The Home Delivered Meals are provided through Cabarrus Meals on Wheels, a separate 501(c)(3) nonprofit agency. The Concord Senior Center is not a Senior Nutrition Site; however, the Mt. Pleasant Senior Center does serve as a Senior Nutrition Site.

Size of Facilities:

- Concord Senior Center: 12,000 sf.
- Mt. Pleasant Senior Center: 3,200 sf.

Facility Cost: *County own or lease and lease rate*

- Concord Senior Center: County owned
- Mt. Pleasant Senior Center: leased to Cabarrus county by Town of Mt. Pleasant for \$1.00 per year

Participation: *Daily average number of program participants in programs/services.*

- Concord Senior Center: 275 to 300 per day
Not a Senior Nutrition Site
- Mt. Pleasant Senior Center: 25 to 50
Average of 21 Senior Nutrition participants



Iredell County Profile

County	Total Population	Senior Population (over 65)	Senior Center "Type"	Center Designation
Stanly	60,791	18.3%	Public	1 Center of Excellence
Iredell	172,916	15.2%	Non-Profit <i>(however, houses Council on Aging which operates in a similar fashion to Stanly Senior Services)</i>	2 Centers of Excellence

Contact information:

Anna Rice, Executive Director of the Iredell Council on Aging
arice@iredellcoa.org or 704-873-8568

Locations:

- Iredell Senior Center** - 344 E. Front Street, Statesville, NC 28677
Designation: Center of Excellence
Year Opened: 1980
Hours of Operation: Monday-Friday: 8:00 AM – 5:00 PM
- South Iredell County Senior Center** - 202 N. Church Street, Mooresville, NC 28115
Designation: Center of Excellence
Year Opened: 1995
Hours of Operation: Monday- Friday: 8:00 AM – 5:00 PM (One Friday of each month social and dance 5:30 PM – 8:00 PM)

Budget Information: source(s) of operational funding for their main center and their satellite locations

Senior Center Operations Funding through Home & Community Care Block Grant, Senior Center General Purpose Funds (Both centers are certified as North Carolina Centers of Excellence). Both Senior Centers in Iredell are independent non-profit organizations, and the Iredell County Council on Aging is a United Way Agency.

Relation to Senior Nutrition Program: *Co-located with a senior nutrition program*

The Iredell County Council on Aging is housed in the Statesville Senior Center and operates the Iredell County Senior Nutrition Program. However, the senior centers in Statesville and Mooresville do not serve as congregate nutrition sites. The Senior Centers do serve as a place where older adults can sign up for the program.

Size of Facilities:

- Statesville Senior Center: 12,614 sf.
- South Iredell Senior Center: 9,563 sf.

Facility Cost: *County own or lease and lease rate*

The Town of Mooresville allows use of an office and other designated areas in the Mooresville Charles Mack Citizens Center at no charge. The Senior Center has an agreement with the Town of Mooresville that includes all maintenance and upkeep of the building as part of their budget and responsibilities.

Participation: *Daily average number of program participants in programs/services.*

- Statesville Senior Center: 72
Not a Senior Nutrition Site
- South Iredell Senior Center: 95
Not a Senior Nutrition Site



Granville County Profile

County	Total Population	Senior Population (over 65)	Senior Center "Type"	Center Designation
Stanly	60,791	18.3%	Public	1 Center of Excellence
Granville	59,031	16.4	Public	1 Center of Excellence 2 Satellite Centers

Contact Information:

Kathy May

Kathy.may@granvillecounty.org or 919-693-1930

Locations:

- Granville County Senior Center** (Granville County Senior Services)- 107 Lanier Street, Oxford, NC 27565
Designation: Center of Excellence
Year Opened: 1987
Hours of Operation: Monday- Friday: 8:30 AM – 5:00 PM
- North Granville Senior Center** - 118 Highway 15, Stovall, NC 27582
Designation: Satellite of Granville County Senior Center
Year Opened: 1996
Hours of Operation: Monday- Friday: 8:30 AM – 5:00 PM
- South Granville Senior Center** - 614- A Douglas Drive, Corner of Hwy 56 & Main Street, Creedmoor, NC 27522
Designation: Satellite of Granville County Senior Center
Year Opened: 1989
Hours of Operation: Monday- Friday: 8:30 AM – 5:00 PM

Budget Information: source(s) of operational funding for their main center and their satellite locations

County Funds, Senior Center Operations funding, Senior Center General Purpose funding for Center of Excellence, Senior Nutrition Funds and other program specific funding such as SHIP and In-Home Aid, etc.

Relation to Senior Nutrition Program: *Co-located with a senior nutrition program*

All three senior center locations house a congregate meal program and host home delivered senior nutrition routes.

Size of Facilities:

- Granville County Senior Center- 12,000 sf.
- North Granville Senior Center- less than 3,000 sf.
- South Granville Senior Center- less than 3,000 sf.

Facility Cost: *County own or lease and lease rate*

- Granville County Senior Center- County owned
- North Granville Senior Center- owned by the town of Stovall. However, the county paid for renovation costs in 1996 and has since paid for all operations and repairs to the building. There is no rent paid.
- South Granville Senior Center- leased for \$1 per year. County pays all operating costs.

Participation: *Daily average number of program participants in programs/services.*

- Granville County Senior Center- 110 participants daily
45-50 congregate nutrition participants
- North Granville Senior Center- 35 participants daily
all senior center participants are also senior nutrition participants
- South Granville Senior Center- 35 participants daily
Estimated 28 congregate nutrition participants



Sampson County Profile

County	Total Population	Senior Population (over 65)	Senior Center "Type"	Center Designation
Stanly	60,791	18.3%	Public	1 Center of Excellence
Sampson	63,124	16.8%	Public	1 Center of Excellence 1 Satellite Center

Contact information:

Lori Sutton, Director

lbsutton@sampsonnc.com or 910-592-4653

Locations:

- Garland Senior Center** - 91 N. Church Avenue, Garland, NC 28441
Designation: Center of Excellence
Year Opened: 1976
Hours of Operation: Monday-Friday: 9:00 AM – 5:00PM
- Butler Court Senior Center** - 501 Bethune Circle, Clinton, NC 28328
Designation: Satellite of Garland Senior Center
Year Opened: 2007
Hours of Operation: Monday-Friday: 8:30 AM – 2:30 PM

Budget Information: *source(s) of operational funding for their main center and their satellite locations*

Senior Center Operations, Senior Center General Purpose, County contributions

Relation to Senior Nutrition Program: *Co-located with a senior nutrition program*

There is a senior nutrition site at both senior centers.

Size of Facilities:

- Garland Senior Center: 4,193 sf. (3,891 sf. total for programs and activities).
- Butler Court Senior Center: estimated around 2,000 sf.

Facility Cost: *County own or lease and lease rate*

No rent at either location.

Participation: *Daily average number of program participants in programs/services.*

- Garland Senior Center: Average of 50 participants daily.
Around 27 senior nutrition participants
- Butler Court Senior Center: up to 20 participants daily
all senior center participants are also senior nutrition participants



Richmond County Profile

County	Total Population	Senior Population (over 65)	Senior Center "Type"	Center Designation
Stanly	60,791	18.3%	Public	1 Center of Excellence
Richmond	44,939	17.1%	Public	2 Centers of Excellence 2 Satellite Centers

Richmond County Senior Center Contact information:

Donna Luther, Director

donna.luther@richmondnc.com or 910-997-8339

City of Hamlet Senior Center Contact information:

Nikki Sewell

nsewell@hamletnc.us or 910-582-7985

Locations:

- East Rockingham Senior Center** - 135 Safie 6th Street, Rockingham, NC 28379
Designation: Center of Excellence
Year Opened: 1987
Hours of Operation: Monday-Friday: 9:00 AM – 5:00 PM
- Rockingham/Richmond County Senior Center** - 225 South Lawrence Street, Rockingham, NC 28380
Designation: Satellite of East Rockingham Senior Center
Year Opened: 1981
Hours of Operation: Monday-Thursday: 7:30 AM – 5:30 PM, Friday: 8:00 AM – 5:00 PM
- Ellerbe Senior Center** - 305 Millstone Road, Ellerbe, NC 28338
Designation: Satellite of East Rockingham Senior Center
Year Opened: 20+
Hours of Operation: Monday-Thursday: 7:30 AM – 4:00 PM, Friday: 8:00 AM – 2:00 PM
- Hamlet Senior Center** - 102 Veterans Drive, Hamlet, NC 28345
Designation: Center of Excellence
Year Opened: 1985
Hours of Operation: Monday-Friday: 8:00 AM – 5:00 PM, Saturday: 9:00 AM- 1:00 PM

Budget Information: *source(s) of operational funding for their main center and their satellite locations*

- East Rockingham Senior Center- Senior Center Operations, General Purpose, County funds and fundraisers
- Rockingham & Ellerbe Senior Center- General Purpose, County funds and fundraisers
- Hamlet Senior Center- City owned. Main source of funding is Senior Center General Purpose funding.

Relation to Senior Nutrition Program: *Co-located with a senior nutrition program*

East Rockingham, and Ellerbe house congregate nutrition sites. The Rockingham Senior Center does not have a congregate nutrition site but operates a frozen home delivered meal route.

Hamlet Senior Center- County operates a senior nutrition program at Hamlet Senior Center.

Size of Facilities:

- East Rockingham Senior Center- 4,065 sf.
- Rockingham Senior Center – 3,321sf.
- Ellerbe Senior Center – 2,564 sf.
- Hamlet Senior Center- 4,116 sf.

Facility Cost: *County own or lease and lease rate*

- East Rockingham Senior Center- County owned
- Rockingham Senior Center - In-kind rental
- Ellerbe Senior Center - \$1,200 per year, yearly renewal of contract
- Hamlet- City owned

Participation: *Daily average number of program participants in programs/services.*

- East Rockingham Senior Center - 65- 70 participants
40-50 congregate nutrition participants
- Rockingham Senior Center – 75-80 participants daily
no meal site on site- but deliver a frozen home delivered meal route



- Ellerbe Senior Center – 20-25 participants daily
15-20 congregate nutrition participants
- Hamlet Senior Center- 60 participants daily
20 congregate nutrition participants

C. Peer Senior Center Comparison Findings:

The peer senior center comparisons show a variety of options for Senior Center service delivery expansion within a county. The models vary on a spectrum from one Certified Senior Center of Excellence with a satellite site to multiple fully functioning, certified centers of excellence within a county.

Some, but not all senior center systems integrate their senior nutrition program with the senior center. Co-locating senior centers and senior nutrition programs is a viable way to leverage resources to serve more older adults in the county.

Some of the models reviewed in the Centralina region and in the state of North Carolina demonstrated County and Municipality partnerships to support senior center locations. Examples included the South Iredell Senior Center, which receives space at the Charles Mack Citizens Center in-kind and the Mt. Pleasant Senior Center in Cabarrus County. The Town of Mt. Pleasant leases the space to Cabarrus County Active Living & Parks for \$1 per year.

Another model that exists is separate County and Municipality senior centers. Examples include Richmond County and Gaston County (not included in the peer review). Richmond County operates 1 Certified Center of Excellence and 2 satellite sites. In addition, within Richmond County, the City of Hamlet Senior Center operates separately and is not affiliated with the County Senior Centers. Gaston County has 2 senior centers. The Gaston County Senior Center is a certified center of excellence and is affiliated with the County and Parks & Recreation. The Bessemer City Senior Center operates independently from the Gaston County Senior Center.

VIII. Conclusions

The two options, Status Quo and Expand, were evaluated based on three criteria:

- Criteria 1: Proximity to senior population
- Criteria 2: Accessibility by senior population
- Criteria 3: Services, programs, and activities available to senior population

Our analysis identified that proximity, nearness, to the facility is a key determinant of participation by the senior population. While the highest densities in 2010 of senior population was in Albemarle followed by the areas near the communities of Badin, Locust, Norwood, Oakboro, and Red Cross. The existing Senior Center in Albemarle is over 10 miles for some of the County's communities experiencing the largest increase in senior populations from 2000-2010. These include the areas near the communities of Locust, Misenheimer, and Red Cross followed in senior population growth by Norwood, Oakboro, and Stanfield.

Figure 11: Proximity & Accessibility Summary Table

	Rate of Senior Population Growth ¹ High >15% growth Moderate 10%-15% growth Low <10% growth	Senior 65+ Population Density ² High >0.15 Moderate 0.03<0.15 Low <.029	2016: Senior 65+ Population living below Poverty Level ³ High > 12% Moderate 5.8<11.9% Low < 5.7%	Distance to Senior Center (road miles)
Albemarle	Low	High	High	N/A
Badin	High	Moderate	Moderate	6.8
Locust	High	Moderate	Low	15.7
Misenheimer	High	Low	Low	11.6
New London	Low	Low	Moderate	6.7
Norwood	Moderate	Moderate	Moderate	11.6
Oakboro	Moderate	Moderate	Moderate	13.7
Red Cross	High	Moderate	Moderate	11.6
Richfield	High	Low	Low	9.7
Stanfield	Moderate	Low	Low	17.5

1. To provide a snapshot of the rate by which the portion of seniors in each tract is changing relative to other age groups in the county, the total numbers for seniors (65+) in each tract were drawn from the 2000 and 2010 Census, and the difference between the two (whether positive or negative) was then compared to the County population. While some tracts show a decrease in the proportion of seniors relative to other age groups, most tracts indicate a growing senior section of the population.

2. For purposes of this study, population of the County was considered by US Census Tract. Because Census Tracts vary widely in their total area, accurate comparison of relative populations between tracts is accomplished by considering population density (people per acre). Otherwise, some tracts might appear more populated than others simply because the tract area is larger.

3. 2016 American Community Survey – Approximation of community based on Census Tract Poverty level.



Based on the second criteria, Accessibility, which means the ability of the senior population to get to/from the facility, there are a few areas of the county where accessibility is limited and there is demand for access to the senior center. The areas with the largest senior population living below the poverty level are near the communities of Albemarle, followed by Badin, New London, Norwood, Oakboro, and Red Cross.

The distribution of citizens based on race, ethnicity, and income must be considered. Equitable planning requires attention to factors that affect environmental justice. Remaining mindful of how choosing a new location for a Senior Center can disparately affect minority and low-income individuals encourages planning to be equitable. Providing targeted outreach and direct services in high-risk areas of need can assist Stanly Senior Services to reach individuals who may be most in need.

Based on the third criteria, Services, programs, and activities available, there is demand for additional services, programs, and activities provided by Senior Services at the current Senior Center and potential new location(s). These include recreational, educational, and service oriented programs and activities.

There is also a general need to improve outreach and communications, 93.9% of the survey participants knew about the Albemarle Senior Center but nearly 33% of participants did not know what services and programs are offered at the Senior Center. As a Certified Center of Excellence, Stanly County Senior Center makes strategic efforts to communicate the availability of existing services to all potential participants in the community. In addition, as a certified Center of Excellence, they are required to conduct targeted outreach for underserved populations such as low income, rural, minorities, and people with disabilities.

IX. Recommendations

Based on the assessment of the two options, Status Quo and Expand, using the three criteria—Proximity, Accessibility, and Senior Services to the senior population—and taking the peer comparisons into consideration, the following are recommendations for the County to consider.

A. Recommended Option: Expand

Based on the analysis of the two options using the three criteria there is a need for additional physical locations to provide senior services to residents of Stanly County. The majority of survey respondents identified a preferred driving distance of up to 5 miles while only one-third of respondents were willing to travel up to 10 miles to a senior center facility.

Potential Locations for Expand (Facilities)

Locust – The area surrounding the community of Locust is one of the fastest growing and highest concentration of senior adults. A facility in this general location could potentially serve other communities nearby that are within the 5-mile driving distance including: Oakboro, Red Cross, and Stanfield.

Norwood – The area surrounding the community of Norwood is fast growing and has a higher concentration of senior adults. A facility in this general location would mostly provide services to senior adults living in this area.

Facility (Facilities) & Expansion Options

Each County can respond to the unique needs of their community when designing their senior center network. Based on the peer facility comparison there are several potential models that Stanly County could choose to provide expanded services within the county. Recognizing the limitations of resources, the County could elect to develop additional physical locations and services over a period of time.

The Stanly County Senior Center is a Multi-Purpose Senior Center certified as a Center of Excellence by the Division of Aging and Adult Services. The senior center could expand services through a “Developing Senior Center” or “Satellite Senior Center/s.” These models could leverage existing county or municipal facilities (such as congregate nutrition sites or other community buildings) or identify new locations. The different models offer a spectrum of activity and service provision that could range from a minimum of expanding current Senior Center community outreach efforts to establishing a second full-time 40 hour a week “Multi-Purpose Senior Center”.



Full North Carolina Division of Aging and Adult Services requirements should be referred to when making an expansion decision see Appendix E-H. Funding considerations can be found in Appendix I & J.

Expansion Models described below:

Expand current Senior center outreach and programming efforts through existing Senior Center - Stanly County Senior Center could expand outreach by offering services in different areas of the county. This could be accomplished by leveraging existing county or partnering municipality space to allow existing Senior Services staff or volunteers to conduct programming or service delivery on site. Examples could include: providing Seniors' Health Insurance Information Program (SHIIP) counseling, tax aide, prescription drug assistance, Evidence Based Health Programs or support groups at secondary locations on an ongoing basis. This option can be implemented even if the county decides to develop a second senior center location, to serve other areas in need.

Developing Senior Center - The County may choose to identify a location as a "developing senior center" and be eligible to receive some funding for up the 3 years. A "developing senior center" must be open at least 16 hours per week. The center must offer at least one on-going outreach activity, one annual event and three different programs and/or activities on a weekly basis during the days it is open, not to include nutrition (if a nutrition program is offered, it is not to be included as one of the three programs and/or activities). There must be a paid or volunteer coordinator available at the site during the hours that it is open. It must be linked administratively to a multi-purpose senior center. The coordinator must have a written job description. Each employee must attend a minimum of six hours of training on an annual basis, and must have received training in at least one of the following topics each year: first aid; emergency response; CPR; death and dying; Alzheimer's disease or dementia; bloodborne pathogens; HIV/AIDS; aging-related topics; management and supervision; or training specific to job responsibility (e.g.: new computer software.) By April 30, prior to each annual funding cycle (July - June), a developing senior center must submit a plan outlining the steps it will take during the fiscal year to become either a satellite center or a multi-purpose senior center within three years. The annual plan must also include a report of accomplishments based on the preceding year's plan. Full requirements can be found in Appendix E.

Satellite Senior Center - A satellite senior center is an extension of a MPSC and must be opened at least three days per week for a minimum of 24 hours and must be linked administratively to a multi-purpose senior center. Satellites must make use of appropriate facilities for its program. Such facilities must be designed, located, constructed or renovated and equipped so as to promote effective access to and operation of its program and to provide for the health, safety and comfort of participants, staff and public. Facilities

may be free standing or located in a larger facility with an area designated for senior center programming during specified hours. It must be staffed by a trained and paid senior center manager who is capable of implementing programs during the hours that the satellite center is in operation. The manager must be available during the hours of operation of the satellite center and must be under the supervision of the MPSC Director. This position may not be made up of several part-time positions. The manager must have a written job description. Each employee must attend a minimum of eight hours of training on an annual basis, and must have received training in at least one of the following topics each year: first aid; emergency response; CPR; death and dying; Alzheimer's disease or dementia; blood-borne pathogens; HIV/AIDS; aging-related topics; management and supervision; or training specific to job responsibility (e.g., new computer software). The center must offer at least two on going outreach activities, two annual events and five programs and/or activities on a weekly basis, not to include nutrition (if a nutrition program is offered, it is not to be included as one of the five programs and/or activities). There must be a written plan for transportation of participants. A list of activities and the hours they are offered must be posted within the facility. A minimum of two volunteers over the age of 60 must be utilized, with a written plan in place describing the duties of the volunteer. A representative from the satellite center over 60 years of age must be on the board or advisory committee of the MPSC in an ex-officio position. At least 80 percent of the facility space must be used for satellite center activities, and the remaining 20 percent may be used for office space. Some counties have multiple satellite senior centers to meet the needs of the community. Additional requirements and guidance can be reviewed in Appendix E.

Multi-Purpose Senior Center - A Multipurpose Senior Center must be open at least 40 hours per week, excepting holidays and inclement weather and must maintain regular hours even though the hours of operation are driven by local needs and preferences. Additional guidance regarding requirements for outreach, training, and programming can be found in Appendix E, F and G. Some counties have more than one fully-functioning multi-purpose senior centers to meet the needs of the community.

B. Recommendations for Services, Programs, and Activities

Senior adults are becoming one of the largest population cohorts. They are also becoming more active and engaged and are looking for these services to be provided by the local senior center. The services desired by senior center users align with these general trends. Most users of the current Senior Center identified the need for additional programs and services in the categories of nature, fitness/recreational, arts programs, social activities, performing arts and educational programs, and adding more day and overnight trips in their offerings. The most requested individual service is SHIIP which through planning, and



strategic volunteer recruitment across the county, could be increased at the Albemarle facility and in the future offered at additional satellite facilities.

When developing programming for a potential new senior center, it is recommended to refer to the North Carolina Division of Aging and Adults Services guidance on requirements for services and activities for developing senior centers, satellite senior centers, Senior Center Operations and SCOPE Certification. Refer to Appendixes E-J

C. Outreach and Communications

In the interim, it would be beneficial to the senior population and for the existing Stanly County Senior Center to enhance its outreach and communications effort to inform and educate seniors about the services, programs, and activities offered at the Senior Center. Currently, Stanly County Senior Services has an extensive communications and outreach effort (Refer to Appendix K).

Additional outreach efforts to consider are:

- Inserts in tax or utility bills
- County Government Services Open House Events
- Speaking to established groups – Rotary Clubs, Book Clubs, and Church Groups for example.
- Leveraging existing county or municipality space to conduct programming or service delivery on site. Examples could include: providing SHIP counseling, tax aide, prescription drug assistance, or support groups at secondary locations on an ongoing basis.



Stanly County Board of Commissioners

Meeting Date: 04/16/2018
 Presenter: Karen L. McDaniel

m

_____ | 4 X
 Consent Agenda | Regular Agenda

Presentation Equipment: Lectern PC* Lectern VCR Lectern DVD Document Camera** Laptop***

Please Provide a Brief Description of your Presentations format: _____

* PC is equipped with Windows XP and Microsoft Office XP (including Word, Excel, and PowerPoint), Internet connectivity and Network connectivity for County Employees.

** If you have need to use the Document Camera and zoom into a particular area, if possible please attach a copy of the document with the area indicated that you need to zoom into. A laser light is available to pinpoint your area of projection.

*** You can bring in a laptop that will allow video out to be connected at the lectern – set display to 60Mhz.

ITEM TO BE CONSIDERED

PUBLIC HEARING

NAMING OF PRIVATE DRIVE OFF OLD COTTONVILLE RD.

Subject The purpose of the public hearing is to receive public comment on the naming of a private drive off Old Cottonville Rd. between Kimberly Ln. and Herring Rd.

- Requested Action**
- Hold the public hearing
 - Request the Board's approval on naming the private drive Crawford-Austin Lane as unanimously chosen by the Address Program Committee due to a tie vote from property owners.

Signature: Karen L. McDaniel

Date: 04/10/2018

Dept. _____

Attachments: Yes _____ No x

Review Process

Certification of Action

Approved
 Yes No Initials

Certified to be a true copy of the action taken by the Stanly County Board of Commissioners on

Finance Director _____

Budget Amendment Necessary _____

County Attorney _____

County Manager _____

Other: _____

 Tyler Brummitt, Clerk to the Board Date

Timeline of Events for Naming of Road off Old Cottonville: Crawford-Austin Ln

- January 22, 2018- Email from Bob Remsburg, with five names submitted by Donnie Smith
- January 23, 2018- Ruled out three of the five names submitted
- January 25, 2018- Sent letter to property owners with choice of Cigar Ln and Red Ln
- February 1, 2018- Received one vote for Cigar Ln from property owner
- February 5, 2018- Received one vote for Red Ln from property owner
- March 5, 2018- Karen McDaniel spoke with Andy Lucas concerning the naming of the road and they agreed that we should reach out one more time to the two property owners that had not submitted a vote.
- March 5, 2018- Letter sent to the two non-voting property owners with the choice of Cigar and Red
- March 14, 2018- Received letter from one property owner stating reasons for not wanting Cigar or Red and indicated that they had lived on this road the longest of all the owners
- March 21, 2018 – Letter sent out to all property owners with choice of Cigar, Red and Crawford-Austin Ln to choose from
- March 22, 2018- Received one vote from the March 5, 2018 letter but the last letter had already gone to mail
- March 28, 2018- Received votes from all owners--- TIE between Red and Crawford-Austin
- April 2, 2018 – Address Committee met- in attendance: Andy Lucas, Michael Sandy, Karen McDaniel, Chris Furr and Lisa Mabry. By unanimous vote- Crawford-Austin Ln was chosen.
- April 2, 2018 – Public hearing notice sent to the Stanly News & Press to be published Thursday, April 5, 2018
- April 4, 2018 – Letter to property owners stating Public Hearing date of April 16, 2018
- April 5, 2018 – Public hearing signs placed at road entrance, Stanly County Courthouse lobby and Norwood Library

hondaryder35@yahoo.com

TR 9616

Road Name Recommendation

Cigar Ln. ✓

Red Ln. ?

Oakley Ln. (Oakleaf/Oakleigh)

South Ln. X

Deer St. X

Dannie & Myra
704-474-3321 or
704-322-0322

Per Stanly County the driveway has to be named for the 911 system. If you have any questions you can call Stanly County Planning & zoning 704-986-3661 ask for Eric Renschurg. Thanks!!

Jan. 2018

1/12/18

Dannie Smith, Sr.
8.30 Acres

If you do not like 1 of the road names picked out call Austin Smith at 704-467-7557 and we will put it on the list if it is not already a road name in the County. This will not be a State rd. either it will just be a named driveway for 911 purposes. But I have to turn in five names to the county they will pick the final name. That's all.

Old Coltonville Rd

↔ 2 houses planned

Yance Austin Alan Shope

Kenneth
Jenny



Lisa Mabry <lmabry@stanlycountync.gov>

Fwd: Donnie Smith property on old cottonille rd

3 messages

Bob Remsburg <brebsburg@stanlycountync.gov>

Mon, Jan 22, 2018 at 2:42 PM

To: Tim Swaringen <tswaringen@stanlycountync.gov>, Lisa Mabry <lmabry@stanlycountync.gov>

FYI - this is the list that came last week requesting the name for a right-of-way. It would serve Tax Record #9616 and several other lots off Old Cottonville Road. The names requested were:

Cigar Lane
 Red Lane
 Oakley Lane
 South Lane
 Deer Street

Contacts are Donnie and Myra Smith at 704-474-3321 or cell at 704-322-0322. I can respond or perhaps Lisa can be in touch.

Thanks, Bob

----- Forwarded message -----

From: **donnie smith** <hondaryder35@yahoo.com>

Date: Mon, Jan 22, 2018 at 2:29 PM

Subject: Donnie Smith property on old cottonille rd

To: "brebsburg@stanlycountync.gov" <brebsburg@stanlycountync.gov>

This was formally the hargett property and we was having to bring list of road names to have road named. My son brought them by the other day and you was out just making sure you got them and how long will it be before we hear from this. Thank You, Donnie Smith (704) 474-3321 (home)

--
 Bob Remsburg, Planner I
 County of Stanly, Planning and Zoning Department
 1000 N. First Street, Suite 13B
 Albemarle, NC 28001
 704-986-3661 (office)
 704-519-6798 (cell)
 704-986-3783 (fax)
 bremsburg@stanlycountync.gov

**Lisa Mabry** <lmabry@stanlycountync.gov>

Mon, Jan 22, 2018 at 2:46 PM

To: Bob Remsburg <brebsburg@stanlycountync.gov>

I will discuss this with Sonya.

Thanks,

Lisa

[Quoted text hidden]

Lisa Mabry <lmabry@stanlycountync.gov>

Mon, Jan 22, 2018 at 2:58 PM

To: Bob Remsburg <brebsburg@stanlycountync.gov>

3/22/2018

Stanly County, NC Mail - Fwd: Donnie Smith property on old cottonille rd

I called Mrs. Smith, she is aware that we have the information.
We will look into this.

Lisa

[Quoted text hidden]



County of Stanly
 201 South Second Street
 ALBEMARLE, NORTH CAROLINA
 28001



911-COMMUNICATIONS

Office of Lisa Mabry

Phone No.: 704-986-3705

Fax No. 704-983-5911

IMPORTANT NOTICE

January 23rd, 2018

Dear Resident,

The Stanly County 911 Department, in an effort to provide the best possible emergency response to its citizens, is in the process of naming any private drive that serves three or more residences. This letter is to inform you that we are beginning the process to name the private drive that serves your residence. If you are the owner of any property that abuts to this private drive, you have a vote in choosing a name for this drive as well.

As of this date, we received five names and we are submitting two names for each of you to vote on. The names are:

CIGAR LN

Print and sign _____

RED LN

Print and sign _____

Please circle one of the above names as your choice, print and sign your name under your choice, and return this letter in the enclosed envelope within ten (10) working days of this letter. We will tally the votes and, using the name that gets the most votes, set a public hearing to name the road. In the event we fail to receive any votes or if there is a tie, the Address Program Committee will choose one of the names listed above and set a public hearing. The County Commissioners shall have final approval following a public hearing as required by GS 153A-239.1. Per County Ordinance, any person wishing to speak on this matter shall submit their comments to the Address Program Administrator two working days before the date of the public hearing stating their objection or support of the chosen road name.

We would appreciate your cooperation in this matter.

Sincerely,

Lisa L. Mabry
 Database Coordinator



County of Stanly
201 South Second Street
ALBEMARLE, NORTH CAROLINA
28001



911-COMMUNICATIONS

Phone No.: 704-986-3705

Fax No. 704-983-5911

IMPORTANT NOTICE
Second Letter

March 5, 2018

Dear Resident,

The Stanly County 911 Department, in an effort to provide the best possible emergency response to its citizens, is in the process of naming any private drive that serves three or more residences.

As of this date, we have not received a vote from you, concerning the naming of this road.
It is very important that you choose from one of the names listed below:

CIGAR LN

Print and sign _____

RED LN

Print and sign _____

Please circle one of the above names as your choice, print and sign your name under your choice, and return this letter in the enclosed envelope within ten (10) working days of this letter. We will tally the votes and, using the name that gets the most votes, set a public hearing to name the road. In the event we fail to receive any votes or if there is a tie, the Address Program Committee will choose one of the names listed above and set a public hearing. The County Commissioners shall have final approval following a public hearing as required by GS 153A-239.1. Per County Ordinance, any person wishing to speak on this matter shall submit their comments to the Address Program Administrator two working days before the date of the public hearing stating their objection or support of the chosen road name.

We would appreciate your cooperation in this matter.

Sincerely,

Lisa L. Mabry
Database Coordinator



County of Stanly
201 South Second Street
ALBEMARLE, NORTH CAROLINA
28001



Phone No.: 704-986-3705

Fax No. 704-983-5911

911-COMMUNICATIONS

IMPORTANT NOTICE

March 21, 2018

Dear Resident,

On January 25, 2018, we sent a letter to all property owners on your road which stated that the road is eligible for a name and address reassignment. We submitted two names for vote. There was a tie with two votes cast. Two property owners did not submit a vote. The Address Program Committee met and decided in fairness to all residents, we submit an additional letter to the two property owners that did not vote.

On March 5, 2018, we sent out a letter to the property owners that did not vote the first time. On March 14, 2018, we received a letter from a property owner with an additional name for vote. Therefore, we are submitting this letter as a final letter.

CIGAR LN

Print and sign _____

RED LN

Print and sign _____

CRAWFORD-AUSTIN LN

Print and sign _____

Please circle one of the above names as your choice, print and sign your name under your choice, return the letter in the enclosed envelope within ten (10) working days of this letter. The votes will be tallied and, using the name that gets the most votes, set a public hearing to name the road. In the event we fail to receive any votes or if there is a tie, the Address Program Committee will choose one of the names listed above and set a public hearing. The County Commissioners shall have final approval following a public hearing as required by GS 153A-239.1. Per County Ordinance, any person wishing to speak on this matter shall submit their comments to the Address Program Administrator two working days before the date of the public hearing stating their objection or support of the chosen road name.

Your cooperation is appreciated.

Sincerely,

Lisa Mabry
Database Coordinator



County of Stanly
201 South Second Street
ALBEMARLE, NORTH CAROLINA
28001



911-COMMUNICATIONS

Phone No.: 704-986-3705

Fax No. 704-983-5911

IMPORTANT NOTICE

April 3, 2018

Dear Resident,

On January 25, 2018, I sent a letter to all the property owners on your road informing you that your road is eligible for a name and address reassignment.

Through the process and final vote of the Addressing Committee, **Crawford –Austin Ln** was the name approved.

This road name request will be brought before The County Commissioners on April 16, 2018 at approximately 6:00 p.m. The County Commissioners shall have final approval following a public hearing as required by GS 153A-239.1. Per County Ordinance, any person wishing to speak on this matter shall submit their comments to the Address Program Administrator two working days before the date of the public hearing stating their objection or support of the chosen road name.

The 911 Department appreciates your cooperation in this matter.

Sincerely,

Lisa Mabry, Database Coordinator
911 Communications Department
201 S. Second Street
Albemarle, NC 28001
704-986-3705

911

County of Stanly
201 South Second Street
ALBEMARLE, NORTH CAROLINA
28001



911-COMMUNICATIONS

Phone No.: 704-986-3705

Fax No. 704-983-5911

IMPORTANT NOTICE

January 25, 2018

2/1/18

Dear Resident,

The Stanly County 911 Department, in an effort to provide the best possible emergency response to its citizens, is in the process of naming any private drive that serves three or more residences. This letter is to inform you that we are beginning the process to name the private drive that serves your residence. If you are the owner of any property that abuts to this private drive, you have a vote in choosing a name for this drive as well.

As of this date, we received five names and we are submitting two names for each of you to vote on. The names are:

	CIGAR LN	
Print and sign	Kenneth & Jennifer Eudy	Kennith Eudy
	RED LN	Jennifer Eudy

Print and sign _____

Please circle one of the above names as your choice, print and sign your name under your choice, and return this letter in the enclosed envelope within ten (10) working days of this letter. We will tally the votes and, using the name that gets the most votes, set a public hearing to name the road. In the event we fail to receive any votes or if there is a tie, the Address Program Committee will choose one of the names listed above and set a public hearing. The County Commissioners shall have final approval following a public hearing as required by GS 153A-239.1. Per County Ordinance, any person wishing to speak on this matter shall submit their comments to the Address Program Administrator two working days before the date of the public hearing stating their objection or support of the chosen road name.

We would appreciate your cooperation in this matter.

Sincerely,
Lisa Mabry
Lisa L. Mabry
Database Coordinator

911

County of Stanly
201 South Second Street
ALBEMARLE, NORTH CAROLINA
28001



911-COMMUNICATIONS

Phone No.: 704-986-3705

Fax No. 704-983-5911

IMPORTANT NOTICE

January 25, 2018

2/5/18

Dear Resident,

The Stanly County 911 Department, in an effort to provide the best possible emergency response to its citizens, is in the process of naming any private drive that serves three or more residences. This letter is to inform you that we are beginning the process to name the private drive that serves your residence. If you are the owner of any property that abuts to this private drive, you have a vote in choosing a name for this drive as well.

As of this date, we received five names and we are submitting two names for each of you to vote on. The names are:

CIGAR LN

Print and sign _____

RED LN

Print and sign Donnie W. Smith SR Donnie W. Smith SR

Please circle one of the above names as your choice, print and sign your name under your choice, and return this letter in the enclosed envelope within ten (10) working days of this letter. We will tally the votes and, using the name that gets the most votes, set a public hearing to name the road. In the event we fail to receive any votes or if there is a tie, the Address Program Committee will choose one of the names listed above and set a public hearing. The County Commissioners shall have final approval following a public hearing as required by GS 153A-239.1. Per County Ordinance, any person wishing to speak on this matter shall submit their comments to the Address Program Administrator two working days before the date of the public hearing stating their objection or support of the chosen road name.

We would appreciate your cooperation in this matter.

Sincerely,
Lisa Mabry
Lisa L. Mabry
Database Coordinator

911

County of Stanly
201 South Second Street
ALBEMARLE, NORTH CAROLINA
28001



911-COMMUNICATIONS

Phone No.: 704-986-3705

Fax No. 704-983-5911

IMPORTANT NOTICE
Second Letter

3/14/18

March 5, 2018

Dear Resident,

The Stanly County 911 Department, in an effort to provide the best possible emergency response to its citizens, is in the process of naming any private drive that serves three or more residences.

As of this date, we have not received a vote from you, concerning the naming of this road.

It is very important that you choose from one of the names listed below:

Please ~~CRAWFORD~~ ←

Print and sign Do not name our road this

My daddy died with lung cancer from smoking.

Print and sign Crawford - Austin Lane

This is my vote. ↵

Please circle one of the above names as your choice, print and sign your name under your choice, and return this letter in the enclosed envelope within ten (10) working days of this letter. We will tally the votes and, using the name that gets the most votes, set a public hearing to name the road. In the event we fail to receive any votes or if there is a tie, the Address Program Committee will choose one of the names listed above and set a public hearing. The County Commissioners shall have final approval following a public hearing as required by GS 153A-239.1. Per County Ordinance, any person wishing to speak on this matter shall submit their comments to the Address Program Administrator two working days before the date of the public hearing stating their objection or support of the chosen road name.

We would appreciate your cooperation in this matter.

Melissa Crawford Austin

704-474-9173 (Home)

704-961-6488 (cell)

Sincerely,
Lisa L. Mabry
Database Coordinator

We are the longest living in this area. I have lived in this area for nearly 60 years. We are Austin's. I was a Crawford.

911

County of Stanly
201 South Second Street
ALBEMARLE, NORTH CAROLINA
28001



911-COMMUNICATIONS

Phone No.: 704-986-3705

Fax No. 704-983-5911

IMPORTANT NOTICE
Second Letter

3/22/18

March 5, 2018

Dear Resident,

The Stanly County 911 Department, in an effort to provide the best possible emergency response to its citizens, is in the process of naming any private drive that serves three or more residences.

As of this date, we have not received a vote from you, concerning the naming of this road.
It is very important that you choose from one of the names listed below:

CIGAR LN

Print and sign _____

RED LN

Print and sign Adam Stipe Adam Stipe

Please circle one of the above names as your choice, print and sign your name under your choice, and return this letter in the enclosed envelope within ten (10) working days of this letter. We will tally the votes and, using the name that gets the most votes, set a public hearing to name the road. In the event we fail to receive any votes or if there is a tie, the Address Program Committee will choose one of the names listed above and set a public hearing. The County Commissioners shall have final approval following a public hearing as required by GS 153A-239.1. Per County Ordinance, any person wishing to speak on this matter shall submit their comments to the Address Program Administrator two working days before the date of the public hearing stating their objection or support of the chosen road name.

We would appreciate your cooperation in this matter.

Sincerely,

Lisa L. Mabry
Database Coordinator

911

County of Stanly
201 South Second Street
ALBEMARLE, NORTH CAROLINA
28001



911-COMMUNICATIONS

Phone No.: 704-986-3705

Fax No. 704-983-5911

IMPORTANT NOTICE

3/28/18

March 21, 2018

Dear Resident,

On January 25, 2018, we sent a letter to all property owners on your road which stated that the road is eligible for a name and address reassignment. We submitted two names for vote. There was a tie with two votes cast. Two property owners did not submit a vote. The Address Program Committee met and decided in fairness to all residents, we submit an additional letter to the two property owners that did not vote.

On March 5, 2018, we sent out a letter to the property owners that did not vote the first time. On March 14, 2018, we received a letter from a property owner with an additional name for vote. Therefore, we are submitting this letter as a final letter.

CIGAR LN

Print and sign _____

RED LN

Print and sign _____

CRAWFORD-AUSTIN LN

Print and sign Kenneth & Jennifer Eudy *Kenneth Jennifer Eudy*

Please circle one of the above names as your choice, print and sign your name under your choice, return the letter in the enclosed envelope within ten (10) working days of this letter. The votes will be tallied and, using the name that gets the most votes, set a public hearing to name the road. In the event we fail to receive any votes or if there is a tie, the Address Program Committee will choose one of the names listed above and set a public hearing. The County Commissioners shall have final approval following a public hearing as required by GS 153A-239.1. Per County Ordinance, any person wishing to speak on this matter shall submit their comments to the Address Program Administrator two working days before the date of the public hearing stating their objection or support of the chosen road name.

Your cooperation is appreciated.

Sincerely,
Lisa Mabry
Lisa Mabry
Database Coordinator

911

County of Stanly
201 South Second Street
ALBEMARLE, NORTH CAROLINA
28001



Water. Air. Land. Success.

911-COMMUNICATIONS

Phone No.: 704-986-3705

Fax No. 704-983-5911

IMPORTANT NOTICE

March 21, 2018

3/23/18

Dear Resident,

On January 25, 2018, we sent a letter to all property owners on your road which stated that the road is eligible for a name and address reassignment. We submitted two names for vote. There was a tie with two votes cast. Two property owners did not submit a vote. The Address Program Committee met and decided in fairness to all residents, we submit an additional letter to the two property owners that did not vote.

On March 5, 2018, we sent out a letter to the property owners that did not vote the first time. On March 14, 2018, we received a letter from a property owner with an additional name for vote. Therefore, we are submitting this letter as a final letter.

~~SIGAR LN~~

Print and sign _____

~~RED LN~~

Print and sign _____

CRAWFORD-AUSTIN LN

Print and sign

Melisa Crawford Austin
Melisa Crawford Austin

Please circle one of the above names as your choice, print and sign your name under your choice, return the letter in the enclosed envelope within ten (10) working days of this letter. The votes will be tallied and, using the name that gets the most votes, set a public hearing to name the road. In the event we fail to receive any votes or if there is a tie, the Address Program Committee will choose one of the names listed above and set a public hearing. The County Commissioners shall have final approval following a public hearing as required by GS 153A-239.1. Per County Ordinance, any person wishing to speak on this matter shall submit their comments to the Address Program Administrator two working days before the date of the public hearing stating their objection or support of the chosen road name.

Your cooperation is appreciated.

Sincerely,

Lisa Mabry
Lisa Mabry
Database Coordinator

Thank you for submitting
this name for me!
— Melisa

911

County of Stanly
201 South Second Street
ALBEMARLE, NORTH CAROLINA
28001



Water. Air. Land. Success.

911-COMMUNICATIONS

Phone No.: 704-986-3705

Fax No. 704-983-5911

IMPORTANT NOTICE

March 21, 2018

3/23/18

Dear Resident,

On January 25, 2018, we sent a letter to all property owners on your road which stated that the road is eligible for a name and address reassignment. We submitted two names for vote. There was a tie with two votes cast. Two property owners did not submit a vote. The Address Program Committee met and decided in fairness to all residents, we submit an additional letter to the two property owners that did not vote.

On March 5, 2018, we sent out a letter to the property owners that did not vote the first time. On March 14, 2018, we received a letter from a property owner with an additional name for vote. Therefore, we are submitting this letter as a final letter.

CIGAR LN

Print and sign _____

Print and sign Adam Stipe Red LN Cedars Sto

CRAWFORD-AUSTIN LN

Print and sign _____

Please circle one of the above names as your choice, print and sign your name under your choice, return the letter in the enclosed envelope within ten (10) working days of this letter. The votes will be tallied and, using the name that gets the most votes, set a public hearing to name the road. In the event we fail to receive any votes or if there is a tie, the Address Program Committee will choose one of the names listed above and set a public hearing. The County Commissioners shall have final approval following a public hearing as required by GS 153A-239.1. Per County Ordinance, any person wishing to speak on this matter shall submit their comments to the Address Program Administrator two working days before the date of the public hearing stating their objection or support of the chosen road name.

Your cooperation is appreciated.

Sincerely,
Lisa Mabry
Lisa Mabry
Database Coordinator

911

County of Stanly
201 South Second Street
ALBEMARLE, NORTH CAROLINA
28001



Water. Air. Land. Success.

911-COMMUNICATIONS

Phone No.: 704-986-3705

Fax No. 704-983-5911

IMPORTANT NOTICE

March 21, 2018

3/28/18

Dear Resident,

On January 25, 2018, we sent a letter to all property owners on your road which stated that the road is eligible for a name and address reassignment. We submitted two names for vote. There was a tie with two votes cast. Two property owners did not submit a vote. The Address Program Committee met and decided in fairness to all residents, we submit an additional letter to the two property owners that did not vote.

On March 5, 2018, we sent out a letter to the property owners that did not vote the first time. On March 14, 2018, we received a letter from a property owner with an additional name for vote. Therefore, we are submitting this letter as a final letter.

CIGAR LN

Print and sign _____

RED LN

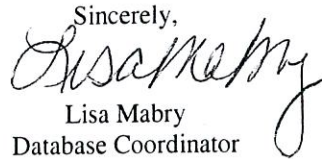
Print and sign Donnie Smith SR Donnie W Smith SR

CRAWFORD-AUSTIN LN

Print and sign _____

Please circle one of the above names as your choice, print and sign your name under your choice, return the letter in the enclosed envelope within ten (10) working days of this letter. The votes will be tallied and, using the name that gets the most votes, set a public hearing to name the road. In the event we fail to receive any votes or if there is a tie, the Address Program Committee will choose one of the names listed above and set a public hearing. The County Commissioners shall have final approval following a public hearing as required by GS 153A-239.1. Per County Ordinance, any person wishing to speak on this matter shall submit their comments to the Address Program Administrator two working days before the date of the public hearing stating their objection or support of the chosen road name.

Your cooperation is appreciated.

Sincerely,

Lisa Mabry
Database Coordinator

STANLY NEWS AND PRESS
PO BOX 488
ALBEMARLE NC 28002
(704)982-2121

ORDER CONFIRMATION (CONTINUED)

Salesperson: SHERRY NANCE RETAIL

Printed at 04/02/18 15:06 by snanc

Acct #: 902434

Ad #: 137307

Status: N

**NOTICE OF
PUBLIC HEARING
STANLY COUNTY BOARD
OF COMMISSIONERS
STANLY COUNTY,
NORTH CAROLINA**

Notice is hereby given that the Stanly County Board of Commissioners will on Monday, April 16, 2018, at 6:00 p.m.; hold a public hearing in The Commons Meeting Room located at 1000 N. First Street, Albemarle, North Carolina to consider re-naming the following road:

Crawford-Austin Lane: Located off Old Cottonville Road, approximately 150 feet north of the intersection of Old Cottonville and Kimberly Lane.

Persons interested in speaking for or against the naming of this road will be heard.

Tyler Brummitt,
Clerk to the Board



County of Stanly
201 South Second Street
ALBEMARLE, NORTH CAROLINA
28001



911-COMMUNICATIONS

Phone No.: 704-986-3705

Fax No. 704-983-5911

IMPORTANT NOTICE

April 4, 2018

Dear Resident,

On January 25, 2018, I sent a letter to all the property owners on your road informing you that your road is eligible for a name and address reassignment.

Through the process and final vote of the Addressing Committee, **Crawford –Austin Ln** was the name approved.

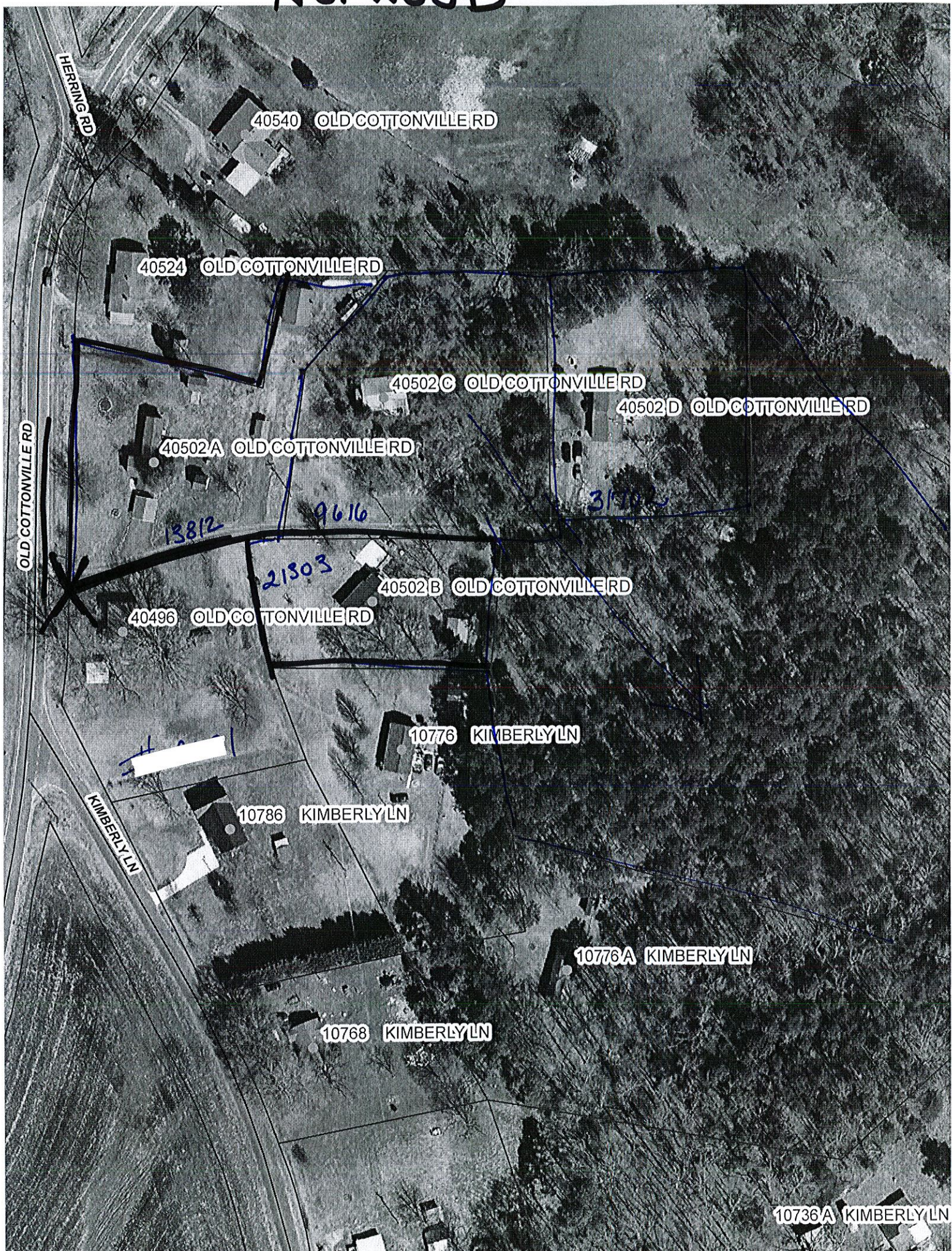
This road name request will be brought before The County Commissioners on April 16, 2018 at approximately 6:00 p.m. The County Commissioners shall have final approval following a public hearing as required by GS 153A-239.1. Per County Ordinance, any person wishing to speak on this matter shall submit their comments to the Address Program Administrator two working days before the date of the public hearing stating their objection or support of the chosen road name.

The 911 Department appreciates your cooperation in this matter.

Sincerely,

Lisa Mabry, Database Coordinator
911 Communications Department
201 S. Second Street
Albemarle, NC 28001
704-986-3705

Norwood



HERRING RD

40540 OLD COTTONVILLE RD

40524 OLD COTTONVILLE RD

40502C OLD COTTONVILLE RD

40502D OLD COTTONVILLE RD

40502A OLD COTTONVILLE RD

OLD COTTONVILLE RD

13812

9616

31500

21503

40502B OLD COTTONVILLE RD

40496 OLD COTTONVILLE RD

10776 KIMBERLY LN

10786 KIMBERLY LN

KIMBERLY LN

1076A KIMBERLY LN

10768 KIMBERLY LN

10736A KIMBERLY LN

Henrich

Old Cottonville Rd

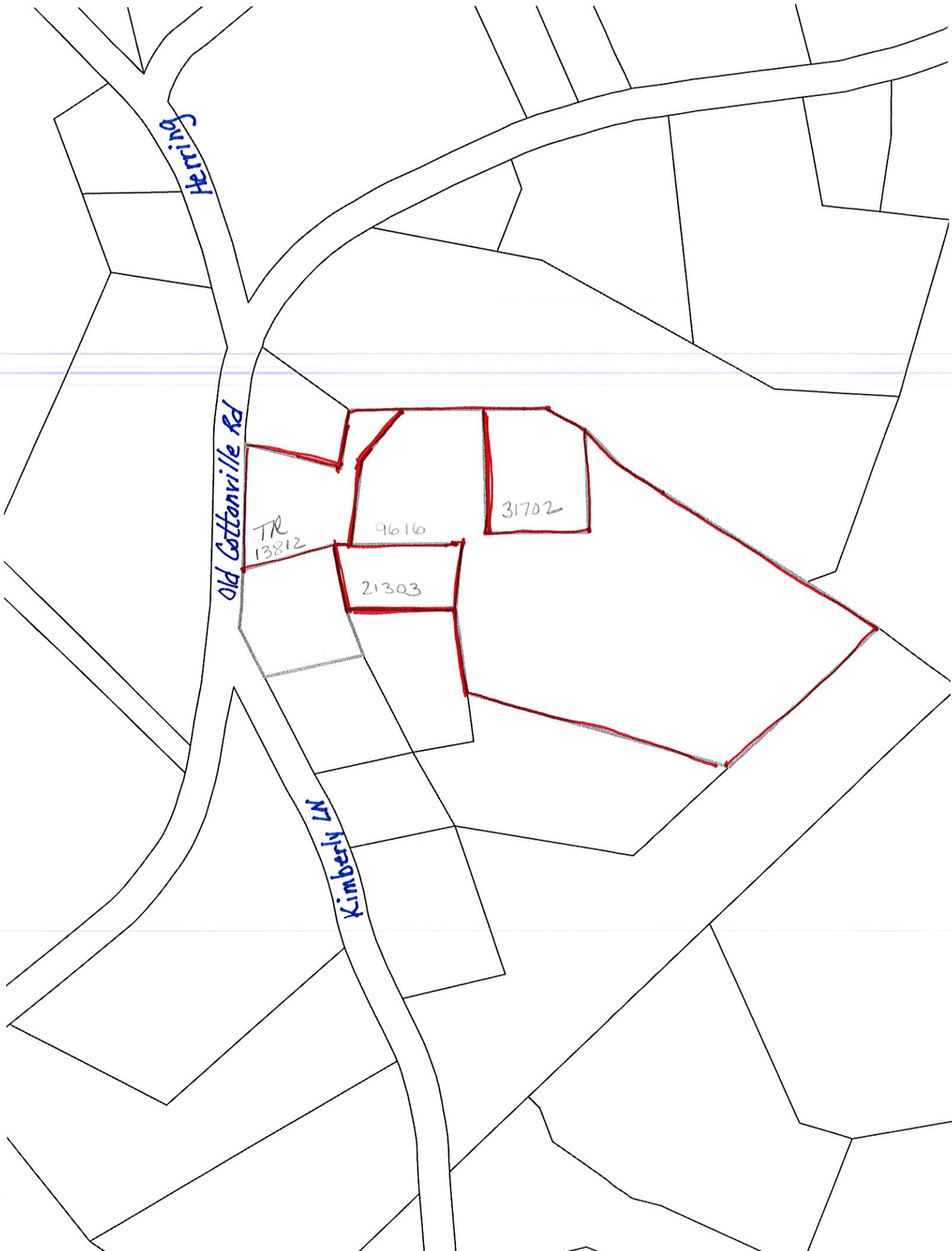
Kimberly Ln

TR
13812

9616

31702

21303



Stanly County Board of Commissioners



Meeting Date April 16, 2018

Presenter: Commissioner Bill Lawhon

Consent Agenda	<div style="font-size: 2em; font-weight: bold; color: blue;">5</div> Regular Agenda
----------------	---

ITEM TO BE CONSIDERED

National Day of Prayer Resolution

Subject

Review and consider adoption of the National Day of Prayer 2018 resolution.

Requested Action

Signature:

Dept Governing Body

Date: 04/6/2018

Attachments: Yes No

Review Process

	Approved		Initials
	Yes	No	
Finance Director	<input type="checkbox"/>	<input type="checkbox"/>	
Budget Amendment Necessary	<input type="checkbox"/>	<input type="checkbox"/>	
County Attorney	<input type="checkbox"/>	<input type="checkbox"/>	
County Manager	<input type="checkbox"/>	<input type="checkbox"/>	
Other:	<input type="checkbox"/>	<input type="checkbox"/>	

Certification of Action

Certified to be a true copy of the action taken by the Stanly County Board of Commissioners on

Tyler Brummitt, Clerk to the Board Date



PROCLAMATION

2018 NATIONAL DAY OF PRAYER

WHEREAS, May 3, 2018, marks the 67th consecutive observance of the National Day of Prayer, as mandated by both the US Congress and by our President in public law 100-307; and

WHEREAS, *Pray for America - Unity* is the theme for the 2018 National Day of Prayer; and

WHEREAS, a National Day of Prayer has been part of our country's heritage since the first one was declared by the Continental Congress in 1775; and

WHEREAS, leaders of our Nation and the Stanly County community have relied upon the power of prayer throughout our history;

NOW, THEREFORE, We, the Stanly County Board of Commissioners do hereby proclaim May 3, 2018, as a DAY OF PRAYER in Stanly County, North Carolina and urge our citizens to join together in their homes, places of work and places of worship, to pray for the unity of the hearts of all mankind, and to continue in prayer for our State and our Nation.

Joseph L. Burleson, Chairman
Stanly County Board of Commissioners

ATTEST:

Tyler Brummitt, Clerk to the Board



Stanly County Board of Commissioners

Meeting Date: April 16, 2018
 Presenter: Andy Lucas

Consent Agenda | Regular Agenda

Presentation Equipment: Lectern PC* Lectern VCR Lectern DVD Document Camera** Laptop***

Please Provide a Brief Description of your Presentations format: _____

* PC is equipped with Windows XP and Microsoft Office XP (including Word, Excel, and PowerPoint), Internet connectivity and Network connectivity for County Employees.

** If you have need to use the Document Camera and zoom into a particular area, if possible please attach a copy of the document with the area indicated that you need to zoom into. A laser light is available to pinpoint your area of projection.

*** You can bring in a laptop that will allow video out to be connected at the lectern – set display to 60Mhz.

ITEM TO BE CONSIDERED

COMMUNITY NURSING HOME ADVISORY COMMITTEE APPOINTMENTS

Subject
 Please see the attached request regarding the appointment of four (4) members to the Nursing Home Advisory Committee.

Enclosed is one (1) volunteer application for Board consideration.

Requested Action
 Request the Board reappoint Johnnie Woodard, Johnnie Harris and Sherry Poplin for three (3) year terms to expire February 28, 2021; Appoint Rick Russell to replace Charlanne Tippett for a three (3) year term to expire February 28, 2021.

Signature: _____

Dept. _____

Date: _____

Attachments: Yes No x

Review Process

Approved		Initials
Yes	No	
Finance Director	___	___
Budget Amendment Necessary	___	___
County Attorney	___	___
County Manager	___	___
Other:	___	___

Certification of Action

Certified to be a true copy of the action taken by the Stanly County Board of Commissioners on

Tyler Brummitt, Clerk to the Board Date



Stanly County Board of Commissioners

Meeting Date: April 16, 2018
 Presenter:

7

Consent Agenda | Regular Agenda

Presentation Equipment: Lectern PC* Lectern VCR Lectern DVD Document Camera** Laptop***

Please Provide a Brief Description of your Presentations format: _____

* PC is equipped with Windows XP and Microsoft Office XP (including Word, Excel, and PowerPoint), Internet connectivity and Network connectivity for County Employees.

** If you have need to use the Document Camera and zoom into a particular area, if possible please attach a copy of the document with the area indicated that you need to zoom into. A laser light is available to pinpoint your area of projection.

*** You can bring in a laptop that will allow video out to be connected at the lectern – set display to 60Mhz.

ITEM TO BE CONSIDERED

CONSENT AGENDA

- A. Minutes – Regular meeting of April 2, 2018.
- B. Finance – Request approval of the attached vehicle tax refunds for March 2018.
- C. Health Dept. – Information related to a Community Health Grant application.
- D. Finance – Request approval of budget amendment # 2018-44.
- E. SCUSA/Senior Services – Request approval of budget amendment # 2018-45.

Subject

Requested Action

Request approval of the above items as presented.

Signature: _____

Dept. _____

Date: _____

Attachments: Yes No ___x_

Review Process

		Approved		Initials
		Yes	No	
Finance Director	___	___		
Budget Amendment Necessary	___	___		
County Attorney	___	___		
County Manager	___	___		
Other:	___	___		

Certification of Action

Certified to be a true copy of the action taken by the Stanly County Board of Commissioners on

Tyler Brummitt, Clerk to the Board Date

**STANLY COUNTY
BOARD OF COMMISSIONERS
REGULAR MEETING MINUTES
APRIL 2, 2018**

COMMISSIONERS PRESENT: Joseph Burleson, Chairman
Gene McIntyre, Vice Chairman
Scott Efird
Bill Lawhon
Janet K. Lowder
Ashley Morgan
Matthew Swain

COMMISSIONERS ABSENT: None

STAFF PRESENT: Andy Lucas, County Manager
Tyler Brummitt, Clerk
Jenny Furr, County Attorney

CALL TO ORDER

Chairman Burleson called the informal work session of the Board to order at 5:30 p.m.

CLOSED SESSION: REAL ESTATE AND ECONOMIC DEVELOPMENT

Motion was made by Commissioner Morgan, seconded by Commissioner Lowder and carried by unanimous vote to go into closed session for the following: To consult with an attorney in accordance with G. S. 143-318.11(a)(3).

*The Board went into Closed Session at 5:30 p.m. and returned to open session at 5: 56p.m.
The Board then proceeded to the Commissioners Meeting Room for the remainder of the meeting.*

CALL TO ORDER

Chairman Burleson called the regular meeting to order at 6:00 p.m. and welcomed everyone in attendance. Commissioner Lawhon gave the opening devotion and led the pledge of allegiance.

APPROVAL/ADJUSTMENTS TO THE AGENDA

Vice Chairman McIntyre moved to approve the agenda as presented. His motion was seconded by Commissioner Morgan and carried by unanimous vote.

ITEM # 1 – CO-OPERATIVE EXTENSION – PRESENTATION AND APPROVAL OF VOLUNTARY AG-DISTRICT & ENHANCED VOLUNTARY AG-DISTRICT APPLICATIONS

Presenter: Lori Ivey, Ag Extension Agent

On behalf of the Ag-District Board, Ms. Ivey presented the following applications for approval as enhanced voluntary agricultural districts. The applicants were:

- **The Fork LLC., Jim Cogdaell** – Two (2) parcels (Parcel #s 658101261441 and 657102758954) and one (1) on Jones Road (Parcel # 658203004857) totaling 1410.12 acres.
- **Christopher Carrothers** – One (1) parcel (FSA #6743/Tract # 11265) for 15.72 acres.
- **D. C. Huneycutt, Jr. and Kristie Huneycutt** - Two (2) tracts (Parcel #s 651701083828 and 651701095595) for 27.07 acres.
- **Clay and Kathy Little** – Three (3) tracts (Parcel #s 65203429157, 653604730472 and 653603419715) for 250.5 acres.
- **Jacob Nance, John Richard Nance and Bonnie Nance** – One (1) tract (Parcel # 557303239467) for 31.55 acres.
- **Gary Dale and Laura Hatley** – One (1) tract (Parcel # 650901061263) for 37.15 acres.
- **Jerry and Misty Roland** – Two (2) tracts (Parcel #s 654902982533 and 654902974943) for 30.81 acres.
- **Anita Sasser Dennis** – Three (3) tracts (Parcel #s 654504944480, 654504845773 and 654504839473) for 123.51 acres.
- **Huneycutt Pig Farm** – Fourteen (14) tracts (Parcel #s 650704521172, 651803115751, 650804805613, 651801061958, 651804802773, 650804838784, 651804649139, 660001251329, 651902555359, 653801371258, 650702796071, 651803043935, 651803046201 and 650804939304) for 815.88 acres.
- **Darrell L. Whitley** – Nine (9) tracts (Parcel #s 558503335223, 559604545810, 559502599898, 559502697660, 559604519792, 559604602817, 559604510808, 559604621173 and 559604631827) for 197.62 acres.

The following applications were submitted for approval as voluntary ag-districts:

- **Frankie Fraley** – One (1) tract (parcel # 663202590571) for 72 acres.
- **Gerald and Juanita McSwain** – Two (2) tract (Parcel #s 654404702820 and 654404618341) for 40.42 acres.
- **Earnest Author Linker** – One (1) tract (Parcel # 557502773595) for 40.43 acres.

With no questions from the Board, Commissioner Swain moved to approve all of the enhanced voluntary ag-district applications as presented. The motion was seconded by Commissioner Lowder and passed by unanimous vote.

On a second motion, Commissioner Swain moved to approve all of the voluntary ag-district applications as requested. The motion was seconded by Commissioner Lowder and carried by a 7 – 0 vote.

ITEM # 2 – BOARD OF EQUALIZATION & REVIEW APPOINTMENTS

Presenter: Clinton Swaringen, Tax Administrator

It was requested the Board appoint two (2) members to the Board of E & R for four (4) year terms to expire December 31, 2021. Two (2) volunteer applications presented for Board consideration were Mr. Hazel D. Efird, Jr. and Mr. Neil Senter.

By motion, Commissioner Lawhon moved to approve the appointment of Mr. Efird and Mr. Senter as requested. The motion was seconded by Commissioner Morgan and passed by unanimous vote.

ITEM # 3 – PROCLAMATION DECLARING APRIL 2ND – 8TH AS NATIONAL PUBLIC HEALTH WEEK

Presenter: David Jenkins, DHHS Director

Mr. Jenkins presented the proclamation then requested the Board's consideration in approving its adoption.

Commissioner Efird moved to approve the resolution as requested and was seconded by Vice Chairman McIntyre. The motion carried with a 7 – 0 vote.

**See Exhibit A
Resolution**

ITEM # 4 – CONSENT AGENDA

Presenter: Chairman Burleson

- A. Minutes – Regular meeting of March 19, 2018.
- B. Planning & Zoning – Request approval of the inter-local agreement to allow Stanly County to administer the Abandoned Manufactured Home program for the City of Albemarle.
- C. Finance – Request approval of budget amendment # 2018-43.
- D. Finance – Request approval of the Monthly Financial Report for February 2018.

PUBLIC COMMENT – None.

BOARD COMMENTS, ANNOUNCEMENTS & COMMITTEE REPORTS

Commissioner Lowder stated that she had been invited to attend the Boy Scout Troop 82 meeting in Albemarle the previous week to talk about county government. She noted that many good questions were asked and she thoroughly enjoyed visiting with them.

Commissioner Efird stated that Locust's summer concert series begins on Saturday, April 14th. He also recognized his wife Tracey and their great nephew Sawyer Griffin who were in attendance.

Commissioner Swain announced that the Stanly County Spring Garden Show will be held on Saturday, April 7th at the Agri-Civic Center and encouraged everyone to attend.

Commissioner Lawhon noted that building permits from January 2018 – March 2018 had increased by 31% over the same time last year with average home values for new construction increasing by 55%. He noted that he and Commissioner Efird attended the Homebuilders Association meeting in March in addition to Chris Moon (Inspections) and David Ezzell (Environmental Health). One of the issues discussed was the poor road conditions in Stanly County. He then requested staff develop a resolution for Board consideration during the April 16th meeting to request NCDOT officials visit Stanly County to see the conditions of the roads.

Chairman Burleson noted that several Board members and staff were wearing blue in honor of autism awareness month and requested staff invite a GHA representative to the next meeting to provide information and bring awareness to the issue.

RETURN TO CLOSED SESSION

Vice Chairman McIntyre moved to recess into closed session to consult with an attorney in accordance with G. S. 143-318.11(a)(3). The motion was seconded by Commissioner Lawhon and passed by unanimous vote at 6:20 p.m.

ADJOURN

With no additional items presented for discussion, Commissioner Swain moved to adjourn the meeting, seconded by Commissioner Lowder and carried by a 7 – 0 vote at 7:12 p.m.

Joseph L. Burleson, Chairman

Tyler Brummitt, Clerk



Stanly County Board of Commissioners

Meeting Date: April 16, 2018
 Presenter: Consent

78
 Consent Agenda | Regular Agenda

Presentation Equipment: Lectern PC* Lectern VCR Lectern DVD Document Camera** Laptop***

Please Provide a Brief Description of your Presentations format: _____

* PC is equipped with Windows XP and Microsoft Office XP (including Word, Excel, and PowerPoint), Internet connectivity and Network connectivity for County Employees.

** If you have need to use the Document Camera and zoom into a particular area, if possible please attach a copy of the document with the area indicated that you need to zoom into. A laser light is available to pinpoint your area of projection.

*** You can bring in a laptop that will allow video out to be connected at the lectern – set display to 60Mhz.

ITEM TO BE CONSIDERED

Please see the attached March 2018 refund report from the North Carolina Vehicle Tax System for taxpayers due vehicle refunds over \$100 which requires Board of Commissioners approval.

Subject

Requested Action

Consider and approve the attached vehicle tax refunds.

Signature: Toby R. Hinson

Dept. Finance

Date: 4/4/18

Attachments: Yes No _____

Review Process

Certification of Action

	Approved		Initials
	Yes	No	
Finance Director	___	___	
Budget Amendment Necessary	___	___	
County Attorney	___	___	
County Manager	___	___	
Other:	___	___	

Certified to be a true copy of the action taken by the Stanly County Board of Commissioners on

 Tyler Brummitt, Clerk to the Board Date



North Carolina Vehicle Tax System

NCVTS Pending Refund report

Report Date
1/2/2016

Payee Name	Address 1	Address 3	Plate Number	Tax Jurisdiction	Levy Type	Change	Interest Change	Total Change
BOLES, JOYCE MARIE	248 HARRISON LN	LOCUST, NC 28097	SYA2945	01	Tax	(\$108.73)	\$0.00	(\$108.73)
				55	Tax	(\$58.42)	\$0.00	(\$58.42)
				55	Vehicle Fee	\$0.00	\$0.00	\$0.00
				11	Tax	(\$16.23)	\$0.00	(\$16.23)
							Refund	\$183.38
DECKER, LARRY LEE	206 BROAD ST	LOCUST, NC 28097	FAV3883	01	Tax	(\$150.66)	\$0.00	(\$150.66)
				55	Tax	(\$80.95)	\$0.00	(\$80.95)
				55	Vehicle Fee	\$0.00	\$0.00	\$0.00
				11	Tax	(\$22.49)	\$0.00	(\$22.49)
							Refund	\$254.10
FORTE, JOHN DANIEL	49916 FONTANA DR	RICHFIELD, NC 28137	CP9561	01	Tax	(\$182.42)	\$0.00	(\$182.42)
				22	Tax	(\$19.06)	\$0.00	(\$19.06)
							Refund	\$201.48
LEISURE TYME RENTALS INC	1816 BADIN RD	ALBEMARLE, NC 28001	CD21690	01	Tax	(\$131.97)	\$0.00	(\$131.97)
				50	Tax	(\$116.21)	\$0.00	(\$116.21)
							Refund	\$248.18
LITTLE, GARRETT LASEAN	PO BOX 2072	ALBEMARLE, NC 28002	DHF2687	01	Tax	(\$73.97)	\$0.00	(\$73.97)
				50	Tax	(\$65.14)	\$0.00	(\$65.14)
				50	Vehicle Fee	\$0.00	\$0.00	\$0.00
							Refund	\$139.11
MAULDIN, TYLER MONROE	35496 LITTLE HILL FARM RD	NORWOOD, NC 28128	HW4803	01	Tax	(\$116.47)	(\$6.69)	(\$123.16)
				15	Tax	(\$17.38)	(\$1.00)	(\$18.38)
							Refund	\$141.54



North Carolina Vehicle Tax System

NCVTS Pending Refund report

Report Date	Address	City	State	Zip	Vehicle ID	Vehicle Type	Amount	Refund
MONARCH	350 PEE DEE AVE STE A	ALBEMARLE,	NC	28001	DKS7989			
					01	Tax	(\$153.80)	\$0.00 (\$153.80)
					50	Tax	(\$135.43)	\$0.00 (\$135.43)
					50	Vehicle Fee	(\$5.00)	\$0.00 (\$5.00)
					30	Tax	(\$22.96)	\$0.00 (\$22.96)
								Refund \$317.19
WILDER, CHRISTOPHER MICHAEL	2443 BADIN RD.	ALBEMARLE,	NC	28001	EEV8737			
					01	Tax	(\$72.59)	\$0.00 (\$72.59)
					50	Tax	(\$63.92)	\$0.00 (\$63.92)
					50	Vehicle Fee	\$0.00	\$0.00 \$0.00
								Refund \$136.51
WILSON, BRIAN THOMAS	3777 KISLING LOOP	PANAMA CITY,	FL	32403	HR8093			
					01	Tax	(\$197.12)	\$0.00 (\$197.12)
					13	Tax	(\$17.65)	\$0.00 (\$17.65)
								Refund \$214.77



Stanly County Board of Commissioners

Meeting Date: 04/16/18
 Presenter:

 X 7C
 Consent Agenda Regular Agenda

Presentation Equipment: Lectern PC* Lectern VCR Lectern DVD Document Camera** Laptop***

Please Provide a Brief Description of your Presentations format: _____

* PC is equipped with Windows XP and Microsoft Office XP (including Word, Excel, and PowerPoint), Internet connectivity and Network connectivity for County Employees.

** If you have need to use the Document Camera and zoom into a particular area, if possible please attach a copy of the document with the area indicated that you need to zoom into. A laser light is available to pinpoint your area of projection.

*** You can bring in a laptop that will allow video out to be connected at the lectern – set display to 60Mhz.

ITEM TO BE CONSIDERED

S Community Health Grant – up to \$150,000.00

u
b The Health Department intends to apply for a Community Health Grant in the amount of \$150,000. If
j received, grant funds will be used to provide Adult Primary Health Care to patients who meet necessary
e income guidelines.
c
t

R No Board action required – for information only.

e
q
u
e
s
t
e
d
A
c
t
i
o
n

Signature: _____	Dept. _____
Date: _____	Attachments: Yes No <u> </u> <u>X</u> <u> </u>
Review Process	
Approved Yes No Initials	Certification of Action
Finance Director _____	Certified to be a true copy of the action taken by the Stanly County Board of Commissioners on _____ — Tyler Brummitt, Clerk to the Board — Date _____
Budget Amendment Necessary _____	
County Attorney _____	
County Manager _____	
Other: _____	



70

AMENDMENT NO: 2018-44

STANLY COUNTY-BUDGET AMENDMENT

BE IT ORDAINED by the Stanly County Board of Commissioners that the following amendment be made to the annual budget ordinance for the fiscal year ending June 30, 2018:

To amend the Livestock Arena Construction Project Fund 215, the expenditures are to be changed as follows:

FUND/DEPART NUMBER	ACCOUNT NUMBER	ACCOUNT DESCRIPTION	CURRENT BUDGETED AMOUNT	INCREASE (DECREASE)	AS AMENDED
215.6160	580.000	Bldgs, Structure, & Improve	\$ -	\$ 175,000	\$ 175,000
TOTALS			\$ -	\$ 175,000	\$ 175,000

This budget amendment is justified as follows:

To increase the budget for the Livestock Arena Construction Project with funds received from the N.C. Department of Commerce.

This will result in a net increase \$ 175,000 in expenditures and other financial use to the County's annual budget. To provide the additional revenue for the above, the following revenues will be increased. These revenues have already been received or are verified they will be received in this fiscal year.

FUND/DEPART NUMBER	ACCOUNT NUMBER	ACCOUNT DESCRIPTION	CURRENT BUDGETED AMOUNT	INCREASE (DECREASE)	AS AMENDED
215.3616	330.76	NC Dept of Commerce	\$ -	\$ 175,000	\$ 175,000
TOTALS			\$ -	\$ 175,000	\$ 175,000

SECTION 2. Copies of this amendment shall be furnished to the Clerk of the Board of Commissioners, Budget Officer, and to the Finance Director.

Adopted this _____ day of _____, 20____

Verified by the Clerk of the Board _____

Reviewed by Department Head	Date	Posted by
<i>Aditya R. Venkatesh</i>	4-10-18	
Reviewed by Finance Director	Date	Journal No.
Reviewed by County Manager	Date	Date



AMENDMENT NO: 2018-45

STANLY COUNTY-BUDGET AMENDMENT

BE IT ORDAINED by the Stanly County Board of Commissioners that the following amendment be made to the annual budget ordinance for the fiscal year ending June 30, 2018:

To amend the General Fund 110, the expenditures are to be changed as follows:

FUND/DEPART NUMBER	ACCOUNT NUMBER	ACCOUNT DESCRIPTION	CURRENT BUDGETED AMOUNT	INCREASE (DECREASE)	AS AMENDED
110.4540.4550	440.000	Service & Maint Contract	\$ -	\$ 8,000	\$ 8,000
110.5380.5384	440.000	Service & Maint Contract	125,806	8,000	133,806
TOTALS			\$ 125,806	\$ 16,000	\$ 141,806

This budget amendment is justified as follows:
To transfer EDTAP funds from SCUSA to Aging Services.

This will result in a net increase \$ 16,000 in expenditures and other financial use to the County's annual budget. To provide the additional revenue for the above, the following revenues will be increased. These revenues have already been received or are verified they will be received in this fiscal year.

FUND/DEPART NUMBER	ACCOUNT NUMBER	ACCOUNT DESCRIPTION	CURRENT BUDGETED AMOUNT	INCREASE (DECREASE)	AS AMENDED
110.3450	440.76	Charges for Trans Contract	\$ 235,000	\$ 8,000	\$ 243,000
110.3586	361.20	EDTAP Grant	-	8,000	8,000
TOTALS			\$ 235,000	\$ 16,000	\$ 251,000

SECTION 2. Copies of this amendment shall be furnished to the Clerk of the Board of Commissioners, Budget Officer, and to the Finance Director.

Adopted this _____ day of _____, 20____

Verified by the Clerk of the Board _____

Becky Wrenhoff *Candice McNeil* 4-10-18
Reviewed by Department Head _____ Date

John R. Vinson 4-10-18
Reviewed by Finance Director _____ Date

Reviewed by County Manager _____ Date

Posted by
Journal No.
Date